

INSTALLATION INSTRUCTIONS

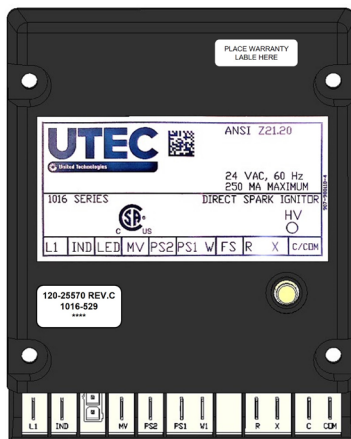


Premier UTEC Ignition Control Board

View these instructions online at www.lbwhite.com

- Before installing your new ignition control board, removal of the black enclosure may be required. See FIG. 1.

FIG. 1 WITH ENCLOSURE



WITHOUT ENCLOSURE

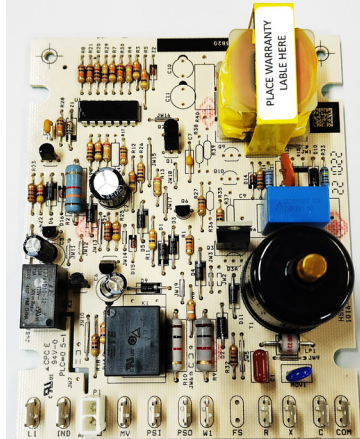


FIG. 2

- For heater model CS350E design or older and any TS350, use the ignition control board with the black enclosure.
- For heater model CS350F design or newer and CS700, remove the ignition control board from within the black enclosure.



- o Insert a flat head screwdriver into slot and pry the back plate off. See FIG. 2.
- o Remove the board and discard the enclosure.
- o Place the warranty label as shown in FIG.1 per control board configuration.

WORLD PROVIDER - INNOVATIVE CLIMATE SOLUTIONS

411 Mason Street, Onalaska, WI 54650 • 800-345-7200 • 608-783-5691 • 608-783-6115 (fax) • www.lbwhite.com

150-133741 REV.B

INSTALLATION INSTRUCTIONS

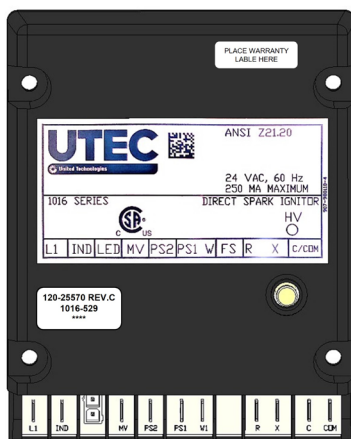


Premier UTEC Ignition Control Board

View these instructions online at www.lbwhite.com

- Before installing your new ignition control board, removal of the black enclosure may be required. See FIG. 1.

FIG. 1 WITH ENCLOSURE



WITHOUT ENCLOSURE

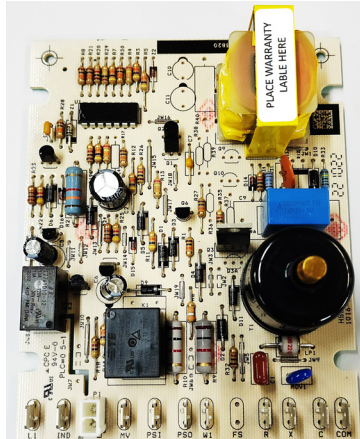


FIG. 2

- For heater model CS350E design or older and any TS350, use the ignition control board with the black enclosure.
- For heater model CS350F design or newer and CS700, remove the ignition control board from within the black enclosure.



- o Insert a flat head screwdriver into slot and pry the back plate off. See FIG. 2.
- o Remove the board and discard the enclosure.
- o Place the warranty label as shown in FIG.1 per control board configuration.

WORLD PROVIDER - INNOVATIVE CLIMATE SOLUTIONS

411 Mason Street, Onalaska, WI 54650 • 800-345-7200 • 608-783-5691 • 608-783-6115 (fax) • www.lbwhite.com

150-133741 REV.B