

Sentinel® Radiant Tube Heater Specifications

Model Numbers:	-Sentinel 100-30-2	-Sentinel 100-40-2	-Sentinel 125-40-2	-Sentinel 125-50-2	-Sentinel 150-40-2
Rating:					
Max Input (Btuh) Dual Stage (hi/low)	100,000/65,000	100,000/65,000	125,000/75,000	125,000/75,000	150,000/90,000
Tube Length (ft.)	30	40	40	50	40
Minimum Installation Height (ft.)	6	6	6	6	6
Spark Ignition	Yes	Yes	Yes	Yes	Yes
Fuel Consumption (max.):					
- Liquid Propane Gas (lbs./hr.)	4.6	4.6	5.8	5.8	6.9
Ventilation (CFM)	140	140	140	140	140
Inlet Gas Supply Pressure					
- LP Gas min. / max. (in. W.C.)	11.0 - 13.5	11.0 - 13.5	11.0 - 13.5	11.0 - 13.5	11.0 - 13.5
Electrical Supply (Volts / Hz / Phase):	115 / 60 / 1	115 / 60 / 1	115/60/1	115/60/1	115/60/1
Min Clearance to Combustibles (ft.)					
- Top	1	1	1	1	1
- Side	6	6	6	6	6
- Below	6	6	6	6	6
Reflector Material	Polished Aluminum	Polished Aluminum	Polished Aluminum	Polished Aluminum	Polished Aluminum
Tube Material	Calorized Steel	Calorized Steel	Calorized Steel	Calorized Steel	Calorized Steel
Heater Case Dimensions (in.):					
- Length	30	30	30	30	30
- Width	18	18	18	18	18
- Height	9.5	9.5	9.5	9.5	9.5
Net Weight (lbs.)	120	150	150	180	180
Shipping Weight (lbs.)	140	170	170	200	200
1/2" x 6' Gas Hose	S	S	S	S	S
Regulator	O	O	O	O	O
Gas Cock and Piping Hardware	O	O	O	O	O
Hanging Hardware	S	S	S	S	S
Air Inlet	O	O	O	O	O
* Option to vent to the outside	Yes	Yes	Yes	Yes	Yes
CSA Canadian Certified	Yes	Yes	Yes	Yes	Yes

Heaters ship standard to run at 0-2000 feet. To operate at higher altitudes, please note in order process to allow for appropriate deviation. S = Standard
* Venting material must be purchased separately from outside source. O = Optional

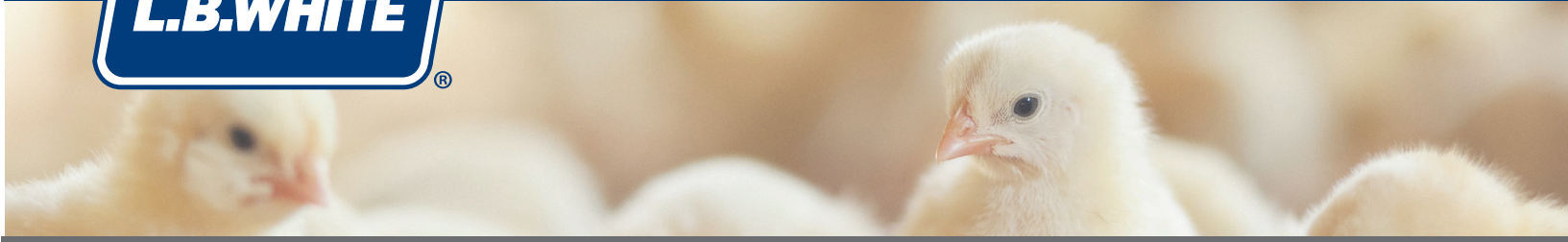


Innovative Climate Solutions
411 Mason Street, Onalaska, WI 54650
800 345 7200 (toll free) or 608 783 5691
608 783 6115 (fax)
info@lbwhite.com | www.lbwhite.com

Your L.B. White Dealer:

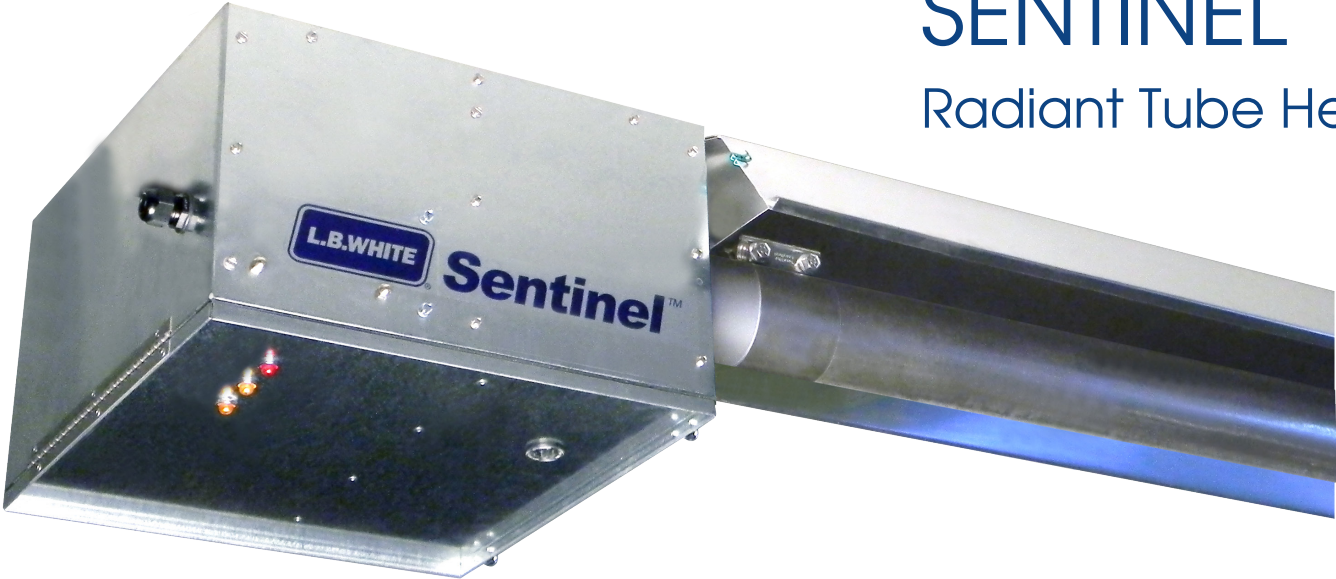
CA RESIDENTS:
 **WARNING**
Cancer and reproductive harm. See
www.P65Warnings.ca.gov.

© 2025 L.B. White Company
All rights reserved.
All specifications are subject
to change without notice.

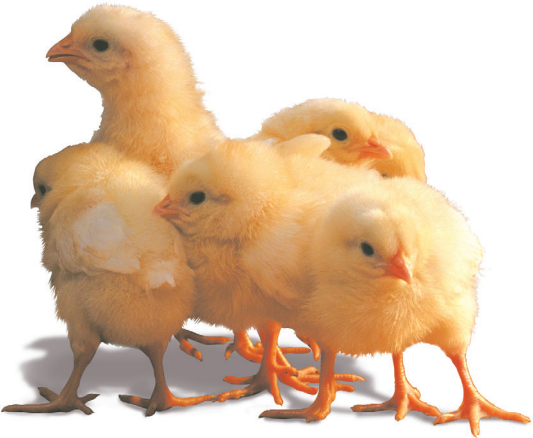


Two-Stage
SENTINEL®
Radiant Tube Heaters

100
125
150



DELIVERS
the best heat coverage in the business



800-345-7200 / 608-783-5691
www.lbwhite.com



Maximum Heating Efficiency and Better Heat Pattern

L.B. White's Sentinel maximizes the radiant heat energy to where it is most needed: to the birds, with minimal waste to convection.

- Advanced reflector design delivers better heat distribution across the floor to the sidewall
- Pressurized burner technology delivers more even heat over the length of the heater.

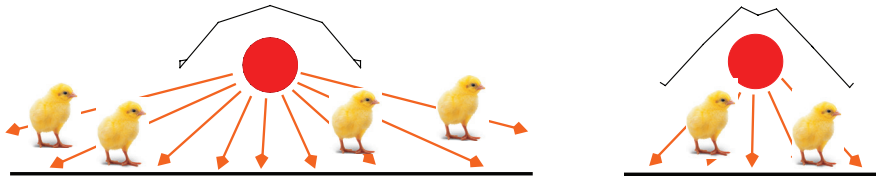


Sentinel, Ceiling Mount



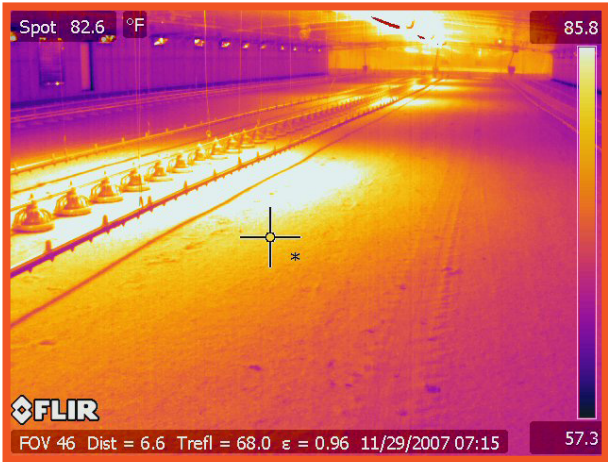
Radiant Tube Heat Pattern Comparison

Model	Sentinel Heater	Competitive Heater
Input Rating	100,000 Btu/h	100,000 Btu/h



Sentinel Infrared Heat Imaging

The Sentinel tube heater delivers significantly more radiant heat to the ground than competitive tube heaters that are not specifically designed for poultry environments.



Quick and Easy Service Access to Burner Box

Easy Maintenance

The L.B. White Sentinel radiant tube heaters provide the utmost ease in operation and maintenance over the life of the heater. The burner box door is positioned on the bottom for drop-down access to vital components. Installation is a breeze with interlocking tubes parts of the complete installation kit.

- Allows for work on heater from under the unit where there is the most room
- Access to components with latches, tools not needed
- Components are accessible and easy to replace



Delivered with Everything Needed for Installation

All Sentinels arrive fully packaged and factory test fired. They also come with all components needed for installation at the site including chains and hooks and outlet cap with damper. Our superior packaging protects tubes and all other vital components from shipping damage and allows quick and easy access during setup.



Easy Assembly & Setup

- Interlocking tubees with clamps provided for each intersection
- Standard ceiling mount unit can be used with winch/pulley system allowing easy lowering for cleaning and repair

Knowledgeable, Friendly Technical & Customer Support

With over 75 years of agricultural heating experience only L.B. White offers you the product quality, technical expertise and knowledgeable customer support you can count on to help you design the best heating solution for your needs.

For more information about how the L.B. White Infraconic can improve production and reduce costs, please contact your local L.B. White representative or contact us directly at **800-345-7200** or online at **www.lbwhite.com**



Dependable Starts and Fuel Efficient Operation

- Spark ignition for better reliability and longer life than HSI
- Shorter ignition times
- Large diagnostic and stage lights on bottom of unit create visibility from entire house.



Safe, Reliable Performance

The Sentinel shares the same quality design standards that have earned L.B. White its reputation as the leader in poultry forced air heating and radiant heating. The Sentinel provides the rugged durability to stand up to years of safe, reliable use in harsh confinement environments. And all Sentinels meet or exceed ANSI and CSA standards for safety.



ONLINE RESOURCES

Visit www.lbwhite.com for frequently asked questions, owners manuals, maintenance videos, and dealer login access for open orders and recent invoices.