



2024-25 PRICING

Updated April 12th, 2024



Products within brochure are
subject to the following warning:



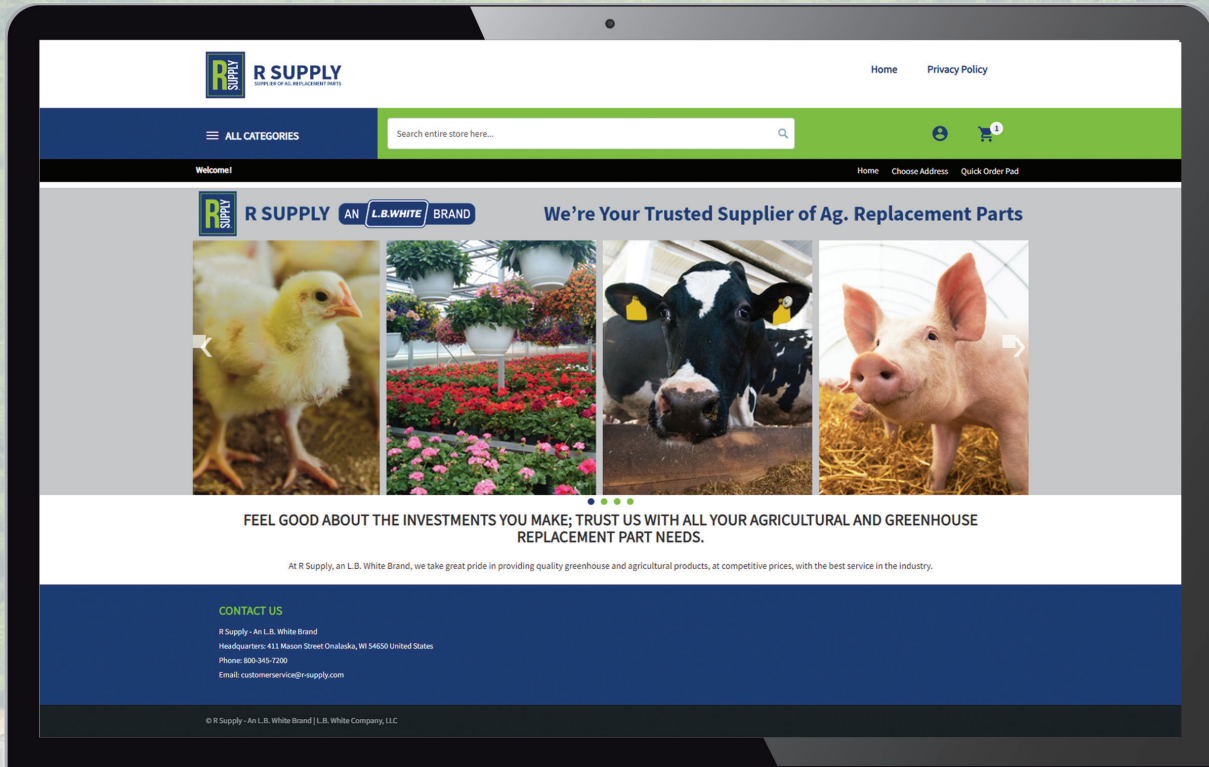
Cancer and reproductive harm. See
www.P65Warnings.ca.gov.



Table of Contents

COOLING SYSTEM ACCESSORIES	1
DOOR ACCESSORIES/WINCHING OPTIONS	4
FAN ACCESSORIES	6
MOTORS	10
PUMPS	12
SOLENOIDS, VALVES, AND GAUGES	16
FILTRATION	17
PLUMBING	19
BUILDING SUPPLIES	22
HARDWARE	23
SERVICE PARTS	24
COOL CELL PARTS	27
TERMS & CONDITIONS/WARRANTY/LIMITATION OF LIABILITY	28

Now you can shop online!



**Did you know you can view products and pricing,
place orders, and view order info at our online store?
Visit shop.r-supply.com today!**

**To login, your username is your
email, and your password is
whatever you set it to when you
received your welcome email to
the site**

**For any issues with logging in,
please give us a call and we can
help you out.**



Cooling System Accessories

Floats

Floats for use inside evaporative cooling system sump tanks.



PART NUMBER	DESCRIPTION	LIST PRICE
606-131524	FLOAT, BALL, 6" DIA, POLYPROPYLENE - PF06	\$15.25
606-131525	FLOAT, CUBE, 4" X 4" X 4", POLYPROPYLENE - PF444-025BK	\$18.00

Valves

Float valves for use inside evaporative cooling system sump tanks.



PART NUMBER	DESCRIPTION	LIST PRICE
674047	VALVE, FLOAT, PVC, 3/4" NPT IN/OUT, W/O HARDWARE	\$34.34
606-131527	VALVE, FLOAT, TROUGH, W/PLASTIC HOUSING - TM825	\$31.16
606-131528	VALVE, FLOAT, TROUGH, W/ALUMINUM HOUSING - TM830	\$34.29

Tanks

Sump tank used for hog buildings, poultry facilities, and greenhouses.

- 32 Gallon, Above Ground, Roto Molded Sump Tank
- Can be placed in the center or either end of cooler
- Built-in drain plug for easy winterization
- Extra room for proper Float operation and adjustment



PART NUMBER	DESCRIPTION	LIST PRICE
674141	TANK, SUMP, ROTO MOLD, W/ LID	\$175.38
674165	KIT, BLACK TANK LID W/CLIPS & HARDWARE	\$58.91

Evaporative Pads

Pads used in evaporative cooling systems.

- Designed, engineered and manufactured in North America
- Constructed of the highest quality raw materials
- Design maximizes surface area to enhance molecular evaporation and cooling efficiency
- Available in custom sizes



PART NUMBER	DESCRIPTION	LIST PRICE
600-131446A	EVAPORATIVE PAD, 4" X 12" X 48", 45/45 FLUTES, W/EDGE COAT ONE SIDE (BOX QTY 24)	\$ 698.05
600-131446B	EVAPORATIVE PAD, 4" X 12" X 60", 45/45 FLUTES, W/EDGE COAT ONE SIDE (BOX QTY 24)	\$ 801.02
600-131446C	EVAPORATIVE PAD, 4" X 12" X 72", 45/45 FLUTES, W/EDGE COAT ONE SIDE (BOX QTY 24)	\$ 903.50
600-131448B	EVAPORATIVE PAD, 6" X 12" X 36", 45/15 FLUTES, W/EDGE COAT ONE SIDE (BOX QTY 32)	\$ 814.84
600-131448C	EVAPORATIVE PAD, 6" X 12" X 48", 45/15 FLUTES, W/EDGE COAT ONE SIDE (BOX QTY 16)	\$ 530.49
600-131448D	EVAPORATIVE PAD, 6" X 12" X 60", 45/15 FLUTES, W/EDGE COAT ONE SIDE (BOX QTY 16)	\$ 610.91
600-131448E	EVAPORATIVE PAD, 6" X 12" X 72", 45/15 FLUTES, W/EDGE COAT ONE SIDE (BOX QTY 16)	\$ 734.30
600-131449A	EVAPORATIVE PAD, 6" X 12" X 60", 45/15 FLUTES, W/EDGE COAT ONE SIDE + BOTTOM EDGE (BOX QTY 16)	\$ 816.50
600-131449B	EVAPORATIVE PAD, 6" X 12" X 72", 45/15 FLUTES, W/EDGE COAT ONE SIDE + BOTTOM EDGE (BOX QTY 16)	\$973.86
600-131450B	EVAPORATIVE PAD, 6" X 12" X 60", 45/15 FLUTES, W/EDGE COAT ONE SIDE (BOX QTY 16)	\$ 590.99
600-131451B	EVAPORATIVE PAD, 6" X 24" X 60", 45/15 FLUTES, W/EDGE COAT ONE SIDE (BOX QTY 8)	\$ 613.90
600-131452A	EVAPORATIVE PAD, 6" X 24" X 60", 45/15 FLUTES, W/EDGE COAT ONE SIDE + BOTTOM EDGE (BOX QTY 8)	\$822.43

Cooling System Accessories

R
SUPPLY

Nozzles

We offer several sizes of nozzles used in poultry building, swine barn, and greenhouse evaporative cooling systems:

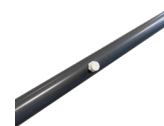


PART NUMBER	DESCRIPTION	LIST PRICE
639-131735A	NOZZLE, 0.5 GPH, W/SS SCREEN, OFF WHITE - 5N0780FWH-SS	\$1.50
639-131735B	NOZZLE, 1.0 GPH, W/SS SCREEN, GRAY - 5N0780GR-SS	\$1.50
639-131735C	NOZZLE, 1.5 GPH, W/SS SCREEN, WHITE - 5N0780FWH-SS	\$1.50
639-131735D	NOZZLE, 2.0 GPH, W/SS SCREEN, CREAM - 5N21105C-SS	\$1.50
639-131735E	NOZZLE, 3.0 GPH, W/SS SCREEN, BLUE - 5N2180BL-SS	\$1.50
639-131735F	NOZZLE, 3.5 GPH, W/SS SCREEN, BLACK - 5N22120BK-SS	\$1.50
639-131736A	NOZZLE, ANTI DRIP, 1.0 GPH, GRAY - 5N0780GR-ND	\$2.45
639-131736B	NOZZLE, ANTI DRIP, 2.0 GPH, CREAM - 5N21105C-ND	\$1.83
639-131736C	NOZZLE, ANTI DRIP, 3.0 GPH, BLUE - 5N2180BL-ND	\$2.45
639-131737A	NOZZLE, 1.0GPH, STAINLESS	\$6.96
639-131737B	NOZZLE, 2.0GPH, STAINLESS	\$6.96

Fogger Nozzle Pipe

Fogger Nozzle Pipes for use in livestock and greenhouse environments.

Contact Customer Service for custom pipe/nozzle configurations and pricing:



PART NUMBER	DESCRIPTION	LIST PRICE
650-131775A	ASSY, SPRAY BAR, 10FT, 0.75", SCH 80, 1 X 2 GPH, 2 X 1 GPH NOZZLES	\$42.49
650-131775B	ASSY, SPRAY BAR, 10FT, 0.75", SCH 80, 4 X 1 GPH NOZZLES	\$43.97

Couplings

Brass coupling used in poultry building, swine barn, and greenhouse evaporative cooling systems:



PART NUMBER	DESCRIPTION	LIST PRICE
645-131768	COUPLING, METER, BRASS, FEMALE SWIVEL X MPT, W/O-RING	\$23.38

Hose Barbs

Several sizes of hose barbs used in greenhouse, hog barn, and poultry facility evaporative cooling systems:

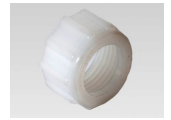


PART NUMBER	DESCRIPTION	LIST PRICE
640-131742	HOSE BARB, NYLON, 1/2" MPT X 3/8" HOSE BARB - A1238	\$0.54
640-131743	HOSE BARB, NYLON, 1/2" MPT X 1/2" HOSE BARB - A12	\$0.63
640-131744	HOSE BARB, NYLON, 3/4" MPT X 1/2" HOSE BARB - A3412	\$0.62
640-131745	HOSE BARB, NYLON, 3/4" MPT X 5/8" HOSE BARB - A3458	\$0.63
640-131746	HOSE BARB, FLAT SEAT, NYLON, 1/2" HOSE BARB - C12	\$0.36
640-131747	HOSE BARB, FLAT SEAT, NYLON, 3/4" HOSE BARB - C34	\$0.39
645-131771	HOSE BARB, BRASS, 3/4" GHF SWIVEL X 1/2" HOSE BARB	\$5.18

Cooling System Accessories

Nuts

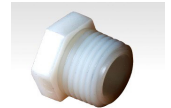
Nuts used with evaporative cooling system nozzles in swine farms, chicken buildings, and greenhouse applications:



PART NUMBER	DESCRIPTION	LIST PRICE
640-131748	NUT, STRAIGHT SWIVEL, NYLON, 3/4" - B34	\$0.48

Nylon Plugs

Nylon plug used with evaporative cooling system nozzles in swine farms, chicken buildings, and greenhouse applications:



PART NUMBER	DESCRIPTION	LIST PRICE
640-131741	PLUG, NYLON, HEX, 1/8" MPT - F18	\$0.41

Adaptors

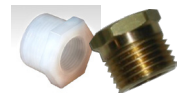
Nylon adaptors in several sizes used with evaporative cooling system nozzles in swine farm, chicken building, and greenhouse applications:



PART NUMBER	DESCRIPTION	LIST PRICE
640-131749	ADAPTOR, NYLON, 3/4" MGHT X 1/2" MPT - E3412	\$0.59
640-131750	ADAPTOR, NYLON, 3/4" MGHT X 3/4" MPT - E34	\$0.51
640-131751	ADAPTOR, NYLON, 3/4" MGHT X 3/4" FPT - G34	\$1.60
640-131752	ADAPTOR, NYLON, 3/4" MGHT X 3/4" MGHT - EE3434	\$1.16

Reducing Bushings

Nylon and brass reducing bushings in several sizes used with evaporative cooling system nozzles in poultry farm, hog building, and greenhouse applications:



PART NUMBER	DESCRIPTION	LIST PRICE
640-131753	BUSHING, REDUCING, NYLON, 1/2" MPT X 1/8" FPT - RB1218	\$0.90
640-131754	BUSHING, REDUCING, NYLON, 3/4" MPT X 1/4" FPT - RB3414	\$0.94
640-131755	BUSHING, REDUCING, NYLON, 3/4" MPT X 1/8" FPT - RB3418	\$1.24
645-131756	BUSHING, REDUCING, BRASS, 1/2" MPT X 3/8" FPT	\$2.49

Drain Valves

Drain valves used with evaporative cooling system nozzles in poultry farm, hog building, and greenhouse applications:



PART NUMBER	DESCRIPTION	LIST PRICE
645-131757	DRAIN VALVE, 1/2" FPT - DR-2	\$24.24
645-131758	DRAIN VALVE, 1/2" MPT - DV-500	\$9.02

Flow Meters

Flow Meters used with evaporative cooling system nozzles in poultry farm, hog building, and greenhouse applications:



PART NUMBER	DESCRIPTION	LIST PRICE
645-131767	FLOW METER, 0.5 - 25GPM, 5/8" MPT X 3/4" MPT - LP 5/8 X 3/4, BADGER WATER METER	\$190.37

Door Accessories/Winching Options



Ratchet Handles

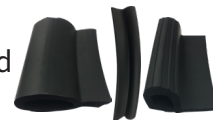
Ratchet handle assembly used in tunnel door systems:



PART NUMBER	DESCRIPTION	LIST PRICE
650-132790	ASSEMBLY, RATCHET HANDLE, TUNNEL DOOR	\$11.09

Gaskets

Our door gaskets will create a proper seal around any gaps in the chicken growing facility and swine facility evaporative cooling system tunnel doors.



PART NUMBER	DESCRIPTION	LIST PRICE
660-131825	GASKET, TUNNEL DOOR, LARGE	\$1.66
660-131826	GASKET, TUNNEL DOOR, SMALL	\$1.66
660-131827	GASKET, TUNNEL DOOR, P-PROFILE	\$1.57
660-131828	GASKET, TUNNEL DOOR, P-PROFILE, LARGE	\$2.95

Pipe Brackets

L-shaped pipe bracket to secure and align 1" pipe to wall.



PART NUMBER	DESCRIPTION	LIST PRICE
659-133485	SUPPORT, TUBE, 90 DEG ANGLE, 2.75" LONG, STEEL	\$12.42

Water Pipe

Standard 1" x 21' galvanized steel water pipe. Our pipe is threaded which means it's easy to assemble for longer systems and eliminates the need for troublesome pipe couplings.



PART NUMBER	DESCRIPTION	LIST PRICE
659-133484	PIPE, WATER, 1" ID X 21FT, GALVANIZED STEEL	\$248.18

Split Drum Spools

2.5" diameter split plastic drums install easily around 1" pipe. Fits narrow webbing or cord.



PART NUMBER	DESCRIPTION	LIST PRICE
659-133482	ROPE DRUM, 2.5" DIA, SPLIT 2-PIECE, FOR 1" TUBE	\$19.93

Webbing

1/2" x 25 yard narrow webbing for use with LBW split drum spools. Polyester construction ensures this webbing will not stretch and can perform under any environmental conditions.



PART NUMBER	DESCRIPTION	LIST PRICE
657-133483	WEBBING, 0.5" X 25YDS, BLACK POLYESTER	\$51.71

Webbing Keeper

Designed to be used in conjunction with narrow webbing to ensure proper house tightness.



PART NUMBER	DESCRIPTION	LIST PRICE
650-133477	ASSY, BRACKET, W/ROLLER/SPACER	\$3.64

Door Accessories/Winching Options

Lock Drives

EWA 12 Power Drives:



PART NUMBER	DESCRIPTION	LIST PRICE
625-133478	POWER DRIVE, EWA 12, 2200 IN/LB, 240V, 60HZ	\$2,267.40
625-133479	POWER DRIVE, EWA 12, 1300 IN/LB, 240V, 60HZ	\$2,126.10

Power Drive Spacer

Designed to aid in retrofitting Lock Drives power drives to existing systems.



PART NUMBER	DESCRIPTION	LIST PRICE
659-133480	PLATE, SPACER, POWER DRIVE	\$27.45

Coupling

Attaches 1" galvanized pipe to Lock Drives EWA 12 Power Drive.



PART NUMBER	DESCRIPTION	LIST PRICE
659-133481	COUPLING, 1" TUBE, INCLUDING BOLTS	\$44.77

Cord

Low stretch polyester cord available in 1/8" or 3/16" diameter. Smooth, durable, and mildew resistant. Great for winching and a multitude of other uses.



PART NUMBER	DESCRIPTION	LIST PRICE
657-133614	CORD, 1/8" DIA, WHITE POLYESTER, 1000FT ROLL	\$35.75
657-133615	CORD, 3/16" DIA, WHITE POLYESTER, 1000FT ROLL	\$62.35

Rope Cutter

Cut and seal your cord at the same time within seconds with our rope cutting box. Heats fast and will save you time.



PART NUMBER	DESCRIPTION	LIST PRICE
675-133538	ROPE CUTTER, 120V, 0.4A, 1200 DEGS F, W/POWER CORD	\$221.75

Fan Controllers

Phason MSC-4 Multi-speed Fan Controller Features:

- Adjustable High/Low settings.
- One variable speed output.
- Can also be used as a light dimmer for brooder heat lamps.
- Rugged NEMA4X ABS plastic enclosure is water resistant, corrosion resistant and fire retardant.
- Will control 6 to 8 20" fans or 3 24" fans.
- 12.5 Amps @ 120/230.



PART NUMBER	DESCRIPTION	LIST PRICE
620-131592	CONTROLLER, FAN, VARIABLE SPEED, 120/240V, 12.5A - MSC-4	\$306.00

PowerTwist Belts

PowerTwist Plus V-Belts minimize downtime with no tools required, easy installation in minutes without tear-downs or struggling with rusted motor bases. PowerTwist Plus sets the standard for link V-belt longevity and durability. Other brands don't come close. The combination of high strength and low elongation under load simply cannot be beaten. Because they're made of a custom-designed, high-tech polyurethane/polyester composite, PowerTwist Plus has significantly superior resistance to oils, grease, water, most common industrial/agricultural chemicals and solvents. The result? Less downtime. Higher productivity. Reduced maintenance costs.

- Easier, faster installation.
- Easily installed without dismantling drive components.
- Make any length by hand in seconds without any tools.
- Longer belt life in harsh operating conditions.
- Unaffected by extreme temperatures, water, steam, oil, grease, and common industrial chemicals and solvents.



PART NUMBER	DESCRIPTION	LIST PRICE
657-131808	BELT, POWERTWIST	\$285.72

Fan Accessories

Vee Belts

Vee Belts transmit power through their tapered sides and are connected to the fan motors and fan sheaves in agricultural applications such as pig, and chicken barns.



PART NUMBER	DESCRIPTION	LIST PRICE	PART NUMBER	DESCRIPTION	LIST PRICE
657-131809-20	BELT, VEE - A20	\$2.77	657-131809-57	BELT, VEE - A57	\$6.75
657-131809-21	BELT, VEE - A21	\$2.87	657-131809-58	BELT, VEE - A58	\$6.88
657-131809-22	BELT, VEE - A22	\$2.98	657-131809-59	BELT, VEE - A59	\$6.99
657-131809-23	BELT, VEE - A23	\$3.08	657-131809-60	BELT, VEE - A60	\$7.09
657-131809-24	BELT, VEE - A24	\$3.17	657-131809-61	BELT, VEE - A61	\$7.20
657-131809-25	BELT, VEE - A25	\$3.30	657-131809-63	BELT, VEE - A63	\$7.42
657-131809-26	BELT, VEE - A26	\$3.39	657-131809-64	BELT, VEE - A64	\$7.54
657-131809-28	BELT, VEE - A28	\$3.60	657-131809-65	BELT, VEE - A65	\$7.63
657-131809-29	BELT, VEE - A29	\$3.70	657-131809-66	BELT, VEE - A66	\$7.76
657-131809-30	BELT, VEE - A30	\$3.82	657-131809-69	BELT, VEE - A69	\$8.09
657-131809-31	BELT, VEE - A31	\$3.92	657-131809-70	BELT, VEE - A70	\$8.19
657-131809-32	BELT, VEE - A32	\$4.03	657-131809-71	BELT, VEE - A71	\$8.31
657-131809-33	BELT, VEE - A33	\$4.13	657-131809-72	BELT, VEE - A72	\$8.42
657-131809-34	BELT, VEE - A34	\$4.25	657-131809-73	BELT, VEE - A73	\$8.52
657-131809-35	BELT, VEE - A35	\$4.37	657-131809-75	BELT, VEE - A75	\$8.76
657-131809-36	BELT, VEE - A36	\$4.46	657-131809-77	BELT, VEE - A77	\$8.98
657-131809-37	BELT, VEE - A37	\$4.58	657-131809-78	BELT, VEE - A78	\$9.07
657-131809-38	BELT, VEE - A38	\$4.67	657-131809-84	BELT, VEE - A84	\$9.73
657-131809-39	BELT, VEE - A39	\$4.80	657-131809-85	BELT, VEE - A85	\$9.86
657-131809-40	BELT, VEE - A40	\$4.89	657-131809-87	BELT, VEE - A87	\$10.07
657-131809-41	BELT, VEE - A41	\$5.01	657-131809-88	BELT, VEE - A88	\$10.19
657-131809-42	BELT, VEE - A42	\$5.10	657-131809-91	BELT, VEE - A91	\$10.52
657-131809-43	BELT, VEE - A43	\$5.23	657-131810-60	BELT, VEE - B60	\$9.64
657-131809-44	BELT, VEE - A44	\$5.34	657-131810-71	BELT, VEE - B71	\$11.10
657-131809-45	BELT, VEE - A45	\$5.44			
657-131809-46	BELT, VEE - A46	\$5.68			
657-131809-47	BELT, VEE - A47	\$5.66			
657-131809-48	BELT, VEE - A48	\$5.78			
657-131809-49	BELT, VEE - A49	\$5.89			
657-131809-50	BELT, VEE - A50	\$5.99			
657-131809-51	BELT, VEE - A51	\$6.11			
657-131809-52	BELT, VEE - A52	\$6.21			
657-131809-53	BELT, VEE - A53	\$6.32			
657-131809-54	BELT, VEE - A54	\$6.45			
657-131809-55	BELT, VEE - A55	\$6.54			
657-131809-56	BELT, VEE - A56	\$6.66			

Ribbed Belts

Ribbed Belts are wider than the Vee belts, can transmit higher forces of power, and are more flexible.

- Constructed of highly engineered, high performance and heat resistant materials.
- Outer fabric wrap is treated with oil and heat resistant, engineered synthetic rubber coated compound, specifically formulated for excellent wear resistance, proven through many hours of testing.
- Components are made using the latest in belt technology available on a global basis.
- Designed to perform at the identical or higher level than all other major US manufacturer's belts of the same type.



PART NUMBER	DESCRIPTION	LIST PRICE
657-131807-21	BELT, RIBBED - AX21	\$5.78
657-131807-28	BELT, RIBBED - AX28	\$6.73
657-131807-29	BELT, RIBBED - AX29	\$6.88
657-131807-31	BELT, RIBBED - AX31	\$7.16
657-131807-32	BELT, RIBBED - AX32	\$7.30
657-131807-34	BELT, RIBBED - AX34	\$7.59
657-131807-35	BELT, RIBBED - AX35	\$7.73
657-131807-38	BELT, RIBBED - AX38	\$8.14
657-131807-39	BELT, RIBBED - AX39	\$8.28
657-131807-41	BELT, RIBBED - AX41	\$8.57
657-131807-43	BELT, RIBBED - AX43	\$8.85
657-131807-44	BELT, RIBBED - AX44	\$9.00
657-131807-45	BELT, RIBBED - AX45	\$9.14
657-131807-46	BELT, RIBBED - AX46	\$9.28
657-131807-47	BELT, RIBBED - AX47	\$9.43
657-131807-48	BELT, RIBBED - AX48	\$9.57

PART NUMBER	DESCRIPTION	LIST PRICE
657-131807-49	BELT, RIBBED - AX49	\$9.71
657-131807-53	BELT, RIBBED - AX53	\$10.29
657-131807-56	BELT, RIBBED - AX56	\$10.71
657-131807-57	BELT, RIBBED - AX57	\$10.86
657-131807-58	BELT, RIBBED - AX58	\$11.00
657-131807-59	BELT, RIBBED - AX59	\$11.14
657-131807-60	BELT, RIBBED - AX60	\$11.29
657-131807-61	BELT, RIBBED - AX61	\$11.43
657-131807-63	BELT, RIBBED - AX63	\$11.72
657-131807-64	BELT, RIBBED - AX64	\$11.87
657-131807-65	BELT, RIBBED - AX65	\$12.00
657-131807-68	BELT, RIBBED - AX68	\$12.43
657-131807-69	BELT, RIBBED - AX69	\$12.58
657-131807-71	BELT, RIBBED - AX71	\$12.86
657-131807-73	BELT, RIBBED - AX73	\$13.15

Pillow Block Bearing

Mechanical part for fan sheaves used in agricultural applications such as pig, and chicken barns.



PART NUMBER	DESCRIPTION	LIST PRICE
659-131815	PILLOW BLOCK BEARING, 1" BORE	\$18.15

Fan Accessories

Fan Sheaves

Fan sheaves used in agricultural applications such as pig, and chicken barns.



PART NUMBER	DESCRIPTION	LIST PRICE
658-131812A	SHEAVE, 1 GROOVE, 1.75"OD, AK SECTION, 5/8" BORE - AK17X5/8	\$10.69
658-131812B	SHEAVE, 1 GROOVE, 2.00"OD, AK SECTION, 1/2" BORE - AK20X1/2	\$10.69
658-131812C	SHEAVE, 1 GROOVE, 2.00"OD, AK SECTION, 5/8" BORE - AK20X5/8	\$10.69
658-131812D	SHEAVE, 1 GROOVE, 2.20"OD, AK SECTION, 5/8" BORE - AK22X5/8	\$11.02
658-131812E	SHEAVE, 1 GROOVE, 2.30"OD, AK SECTION, 5/8" BORE - AK23X5/8	\$11.69
658-131812F	SHEAVE, 1 GROOVE, 2.30"OD, AK SECTION, 7/8" BORE - AK23X7/8	\$11.69
658-131812G	SHEAVE, 1 GROOVE, 2.5"OD, AK SECTION, 5/8" BORE - AK25X5/8	\$12.35
658-131812H	SHEAVE, 1 GROOVE, 2.60"OD, AK SECTION, 5/8" BORE - AK26X5/8	\$12.66
658-131812J	SHEAVE, 1 GROOVE, 2.70"OD, AK SECTION, 5/8" BORE - AK27X5/8	\$18.89
658-131812K	SHEAVE, 1 GROOVE, 2.80"OD, AK SECTION, 5/8" BORE - AK28X5/8	\$17.89
658-131812L	SHEAVE, 1 GROOVE, 3.05"OD, AK SECTION, 5/8" BORE - AK30X5/8	\$23.36
658-131812M	SHEAVE, 1 GROOVE, 3.25"OD, AK SECTION, 5/8" BORE - AK32X5/8	\$25.50
658-131812N	SHEAVE, 1 GROOVE, 3.45"OD, AK SECTION, 5/8" BORE - AK34X5/8	\$17.05
658-131812P	SHEAVE, 1 GROOVE, 3.75"OD, AK SECTION, 5/8" BORE - AK39X5/8	\$21.55
658-131812Q	SHEAVE, 1 GROOVE, 3.95OD, AK SECTION, 5/8" BORE - AK41X5/8	\$24.75
658-131812R	SHEAVE, 1 GROOVE, 4.25"OD, AK SECTION, 5/8" BORE - AK44X5/8	\$25.34
658-131812S	SHEAVE, 1 GROOVE, 4.95"OD, AK SECTION, 5/8" BORE - AK51X5/8	\$28.03
658-131812T	SHEAVE, 1 GROOVE, 4.95"OD, AK SECTION, 3/4" BORE - AK51X3/4	\$29.81
658-131812U	SHEAVE, 1 GROOVE, 5.25"OD, AK SECTION, 3/4" BORE - AK54X3/4	\$28.68
658-131812V	SHEAVE, 1 GROOVE, 6.25"OD, AK SECTION, 1" BORE - AK84X1	\$48.87
658-131812W	SHEAVE, 1 GROOVE, 9.25"OD, AK SECTION, 1" BORE - AK94X1	\$57.53
658-131812X	SHEAVE, 1 GROOVE, 10.25"OD, AK SECTION, 1" BORE - AK104X1	\$55.21
658-131812Y	SHEAVE, 1 GROOVE, 11.25"OD, AK SECTION, 1" BORE - AK114X1	\$58.67
658-131812Z	SHEAVE, 1 GROOVE, 14.25"OD, AK SECTION, 1" BORE - AK144X1	\$95.98
658-131813A	SHEAVE, 2 GROOVE, 2.55"OD, AK SECTION, 3/4" BORE - 2AK25X3/4	\$29.54
658-131813B	SHEAVE, 2 GROOVE, 2.75"OD, AK SECTION, 5/8" BORE - 2AK27X5/8	\$33.66
658-131813C	SHEAVE, 2 GROOVE, 3.45"OD, AK SECTION, 5/8" BORE - 2AK34X5/8	\$42.36

Nidec Fan Motors

Our NIDEC fan motors/US Fan Motors power poultry house fans, swine facility fans, greenhouse fans, dairy fans, and other agricultural fans.



PART NUMBER	DESCRIPTION	LIST PRICE
623-131612	MOTOR, FAN, 0.5HP, 115/230V, 900RPM, 0.625" DIA SHAFT, FRAME 48 - NIDEC - 8102	\$315.41
623-131613	MOTOR, FAN, 0.5HP, 115/230V, 1725RPM, 0.625" DIA SHAFT, FRAME 56 - NIDEC - FD12BA2P	\$290.76
623-131614	MOTOR, FAN, 0.75HP, 115/230V, 1725RPM, 0.625" DIA SHAFT, FRAME 56 - NIDEC - FD34BA2P	\$371.41
623-131616	MOTOR, FAN, 1.0HP, 230V, 850RPM, 0.625" DIA SHAFT, FRAME 56 - NIDEC - FD1AA4KCR	\$387.51
623-131617	MOTOR, FAN, 1.0HP, 115/230V, 1725RPM, 0.625" DIA SHAFT, FRAME 56, REGULAR BASE - NIDEC - FD1CA2J	\$321.15
623-131618	MOTOR, FAN, 1.0HP, 115/230V, 1725RPM, 0.625" DIA SHAFT, FRAME 56, RESILIENT BASE - NIDEC - FD1CA2J9	\$346.90
623-131619	MOTOR, FAN, 1.0HP, 115/230V, 1725/1450RPM, 0.625" DIA SHAFT, FRAME 56 - NIDEC - FD1CPA2JH	\$379.94
623-131620	MOTOR, FAN, 1.5HP, 115/230V, 1725/1450RPM, 0.625" DIA SHAFT, FRAME 56 - NIDEC - FD32CA2P	\$415.19
623-131621	MOTOR, FAN, 1.5HP, 115/230V, 1725RPM, 0.625" DIA SHAFT, FRAME 56 - NIDEC - FD32CPA2P	\$382.25

Nidec Auger Motors

Our NIDEC Auger Motors/US Auger Motors power grain augers and feed augers in the harshest poultry facility and swine growing conditions.



PART NUMBER	DESCRIPTION	LIST PRICE
623-131622	MOTOR, AUGER, 0.33HP, 115/230V, 1725/1450RPM, 0.5" DIA SHAFT, FRAME 56 - NIDEC - FD13B-M2PZYR	\$279.78
623-131623	MOTOR, AUGER, 0.5HP, 115/230V, 1725/1450RPM, 0.5" DIA SHAFT, FRAME 56 - NIDEC - FD12CM2PZYR	\$302.71
623-131624	MOTOR, AUGER, 0.75HP, 115/230V, 1725/1425RPM, 0.5" DIA SHAFT, FRAME 56 - NIDEC - FD34C-M2PZYR	\$358.18
623-131625	MOTOR, AUGER, 0.75HP, 190/380 - 230/460V, 1725/1425RPM, 0.5" DIA SHAFT, FRAME 56, 3 PH - NIDEC - FD34SM2DZYR	CALL FOR PRICE
623-131626	MOTOR, AUGER, 1.0HP, 115/230V, 1725RPM, 0.625" DIA SHAFT, FRAME 56 - NIDEC - FD1CM2PZY	\$380.48
623-131628	MOTOR, AUGER, 1.5HP, 115/230V, 1725RPM, 0.625" DIA SHAFT, FRAME 56 - NIDEC - FD32CM2PHZY	\$530.94

Nidec Farm Duty Motors

Our NIDEC Farm Duty Motors/US Farm Duty Motors power aeration fans, milking equipment, pumps, conveyors, air compressors, plus more agricultural and industrial applications.



PART NUMBER	DESCRIPTION	LIST PRICE
623-131629	MOTOR, FARM DUTY, 0.5HP, 115/230V, 1725RPM, 0.625" DIA SHAFT, FRAME 56 - NIDEC - FD12CM2P	\$376.27
623-131630	MOTOR, FARM DUTY, 0.75HP, 115/230V, 1725RPM, 0.625" DIA SHAFT, FRAME 56 - NIDEC - FD34CM2P	\$494.28
623-131632	MOTOR, FARM DUTY, 1.0HP, 115/230V, 1725RPM, 0.625" DIA SHAFT, FRAME 56 - NIDEC - FD1CM2PZ	\$385.52
623-131633	MOTOR, FARM DUTY, 1.5HP, 115/230V, 1725RPM, 0.625" DIA SHAFT, FRAME 56 - NIDEC - FD32CM2PH	\$454.87
623-131634	MOTOR, FARM DUTY, 2.0HP, 115/230V, 1725RPM, 0.875" DIA SHAFT, FRAME 56 - NIDEC - FD2CM2PHZ	\$662.81

Hessaire Fan Motors

Our Hessaire fan motors power poultry house fans, swine facility fans, greenhouse fans, dairy fans, and other agricultural fans.



PART NUMBER	DESCRIPTION	LIST PRICE
624-131636	MOTOR, FAN, 1/12HP, 115V, 1600RPM, 8MM DIA SHAFT, FRAME 37 - HESSAIRE - E060-4B3	\$70.74
624-131637	MOTOR, FAN, 1/10HP, 115/230V, 1725RPM, 0.5" DIA SHAFT, FRAME 45 - HESSAIRE - B075-4CNY	\$118.72
624-131638	MOTOR, FAN, 1/3HP, 115/230V, 1725RPM, 0.5" DIA SHAFT, FRAME 48 - HESSAIRE - B250-4EC	\$156.46
624-131639	MOTOR, FAN, 0.5HP, 115/230V, 1725RPM, 0.625" DIA SHAFT, FRAME 48 - HESSAIRE - B370-8E	\$210.13
624-131640	MOTOR, FAN, 1.0HP, 115/230V, 1725RPM, 0.625" DIA SHAFT, FRAME 56 - HESSAIRE - A750-4CE	\$344.15

Flint & Walling Submersible Pumps

Pumps offer a non-automatic design for poultry applications such as poultry growing facilities and chicken houses.

- Rugged, oil-filled motor
- Thermal overload protects against overheating
- Epoxy coated, cast iron design dissipates motor heat to ensure long life
- 2" discharge for 2" (50 mm) solids pumping capacity
- 2" bottom suction inlet with vortex impeller
- 15' (5 m) waterproof power cord with grounded plug
- Silicon carbide seal for reliable service and extended life
- Temperature rating: 130° F (54° C)



PART NUMBER	DESCRIPTION	LIST PRICE
630-131650	PUMP, SUBMERSIBLE, 0.5HP, 1.5 - 2.0" NPT, 115V, 60HZ, 1PH, 80GPM - 50TCPPC	\$517.42
630-131651	PUMP, SUBMERSIBLE, 0.5HP, 1.5 - 2.0" NPT, 230V, 60HZ, 1PH, 80GPM - ECP552PC	\$525.30
630-131652	PUMP, SUBMERSIBLE, 0.75HP, 1.5 - 2.0" NPT, 230V, 60HZ, 1PH, 89GPM, - ECP752PC	\$461.09

Flint & Walling Centrifugal Pumps

Pumps can be used in a wide variety of applications including booster service, water circulation, liquid transfer, evaporative cooling systems, jockey pump service, and for general service in farm, commercial and industrial applications.

- Non self-priming
- Suction lifts up to 25' (8 m)
- Low-lead brass or thermoplastic impellers
- Capacities to 6,600 GPH (24,984 LPH)
- Pressures to 45 PSI
- Discharge can be rotated for horizontal or vertical positioning



PART NUMBER	DESCRIPTION	LIST PRICE
630-131653	PUMP, CENTRIFUGAL, 0.5HP, 1.25" NPT, 115/230V, 60HZ, 1PH, 44GPM - CJ103051AB	\$1,048.20
630-131655	PUMP, CENTRIFUGAL, 0.5HP, 1.25" NPT, 110/220V, 50HZ, 1PH, 44GPH - CXJ103051	\$1,324.73
630-131656	PUMP, CENTRIFUGAL, 0.75HP, 1.25" NPT, 110/220V, 50HZ, 1PH, 68GPH - CXJ103071	\$1,316.31
630-131657	PUMP, CENTRIFUGAL, 0.75HP, 1.25" NPT, 115/230V, 60HZ, 1PH, 68GPH - CJ103071	\$1,030.89
630-131658	PUMP, CENTRIFUGAL, 0.75HP, 1.25" NPT, 208-230/460V, 50/60HZ, 3PH, 68GPH - CJ103073	\$1,113.66
630-131659	PUMP, CENTRIFUGAL, 1.0HP, 1.25" NPT, 115/230V, 60HZ, 1PH, 75GPH - CJ103101	\$1,457.74

Flint & Walling Booster Pumps

Pumps can be used in a wide variety of applications including pressure cleaning, spray or mist systems, jockey pumps, booster service, reverse osmosis, water circulation, and general purpose pumping.

- Designed to increase water pressure from city mains or private water systems
- Powder coated cast iron and stainless steel



PART NUMBER	DESCRIPTION	LIST PRICE
630-131661	PUMP, BOOSTER, 0.5HP, 0.75" NPT, 115/230V, 60HZ, 1PH, 12 STAGE - PB0512A051	\$768.71
630-131662	PUMP, BOOSTER, 0.75HP, 0.75" NPT, 115/230V, 60HZ, 1PH, 12 STAGE - PB0712A071	\$777.50
630-131663	PUMP, BOOSTER, 1.0HP, 0.75" NPT, 115/230V, 60HZ, 1PH, 14 STAGE - PB1014A101	\$881.61

Pumps

Goulds Submersible Pumps

Pumps can be used in a variety of agricultural applications including water draining, water transfer, and dewatering.

- Corrosion-resistant construction
- Stainless Steel motor casing and fasteners
- Glass-filled thermoplastic impeller and casing
- Upper and lower heavy duty ball bearing construction
- Motor is permanently lubricated for extended service life and is powered for continuous operation. All ratings are within the working limits of the motor.
- Hard coated 400 series stainless steel shaft for improved corrosion resistance
- Float switch is adjustable for various liquid levels. Easily removed for direct pump operation or switch replacement
- Complete unit is lightweight, portable and easy to service
- Available in manual and automatic versions. See next page for specific order numbers

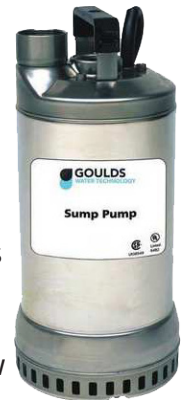


PART NUMBER	DESCRIPTION	LIST PRICE
631-131665	PUMP, SUBMERSIBLE, 0.33HP, 1.5" NPT, 115V, 60HZ, 1PH, 57GPM - LSP0311	\$368.41
631-131666	PUMP, SUBMERSIBLE, 0.75HP, 1.5" NPT, 115V, 60HZ, 1PH, 57GPM - LSP0711F	\$498.61
631-131667	PUMP, SUBMERSIBLE, 0.75HP, 1.5" NPT, 230V, 60HZ, 1PH, 57GPM - LSP0712F	\$487.89
631-131668	PUMP, SUBMERSIBLE, 0.75HP, 1.5" NPT, 115V, 60HZ, 1PH, 57GPM, W/FLOAT SWITCH - LSP0711ATF	\$557.59
631-131669	PUMP, SUBMERSIBLE, 0.75HP, 1.5" NPT, 230V, 60HZ, 1PH, 57GPM, W/FLOAT SWITCH - LSP0712ATF	\$552.23

Goulds Dewatering Pumps

Pumps can be used in a variety of agricultural applications including draining ditches and pits, water drainage/transfer, handling dirty waters, and excavating drainage in building trade.

- Impeller: AISI 304 SS open impeller
- Diffuser Plate: AISI 304 SS with Polyurethane coating for maximum resistance to abrasion
- Casing: AISI 304 SS
- Mechanical Seal: Silicon carbide sealing faces, all metal components of AISI type 300 stainless steel running in protected oil chamber
- Elastomers: BUNA-N
- Shaft: AISI type 304 stainless steel high strength pump shaft with keyed and locking cap screw impeller fastening
- Motor: Air filled class F insulated design for continuous use
- Designed for Continuous Operation: Pump ratings are within the motor's working limits and can be operated continuously without damage
- Bearings: Upper and lower heavy duty ball bearing construction



PART NUMBER	DESCRIPTION	LIST PRICE
631-131670	PUMP, DEWATERING, 0.5HP, 1.5" NPT, 115V, 60HZ, 1PH, 110GPM - 1DW51C0EA	\$1,182.41
631-131671	PUMP, DEWATERING, 0.5HP, 1.5" NPT, 230V, 60HZ, 1PH, 110GPM - 1DW51C1EA	\$1,192.59

Goulds Effluent Pumps

Pumps can be used in a variety of on-site wastewater treatment applications including mound systems, effluent/dosing systems, low pressure pipe systems, basement draining, and heavy duty sump/dewatering.

- Complete unit is heavy duty, portable, and compact with cast iron body and corrosion resistant construction
- Thermoplastic impeller and cover
- Upper sleeve and lower heavy duty ball bearing construction
- Motor is permanently lubricated for extended service life
- Powered for continuous operation
- All ratings are within the working limits of the motor
- Quick disconnect power cord, 20' standard length, heavy duty 16/3 SJTW with NEMA 5-15P, three prong, 115 volt grounding plug
- Mechanical seal is carbon, ceramic, BUNA and stainless steel
- Stainless steel fasteners



PART NUMBER	DESCRIPTION	LIST PRICE
631-131681	PUMP, EFFLUENT, 0.5HP, 1.5" NPT, 115V, 60HZ, 1PH, 70GPM - PE51M	\$621.60
631-131682	PUMP, EFFLUENT, 0.5HP, 1.5" NPT, 230V, 60HZ, 1PH, 70GPM - PE52M	\$642.95
631-131683	PUMP, EFFLUENT, 0.5HP, 1.5" NPT, 115V, 60HZ, 1PH, 60GPM - EP0511F	\$539.41
631-131684	PUMP, EFFLUENT, 0.5HP, 1.5" NPT, 230V, 60HZ, 1PH, 60GPM - EP0512F	\$553.06

Goulds Booster Pumps

Pumps can be used in a variety of applications including commercial or agricultural pressure washing, reverse osmosis, evaporative cooling systems/misters, booster service, spray systems, water circulation, filtration, HVAC, and general purpose pumping.

- Multi-stage Design: Provides steady, quiet, vibration free, operation.
- Standard cast iron for general service or optional stainless steel for filtration applications.
- O-ring Casing Seal: Reliable high pressure seal with easy disassembly for maintenance/repair.
- Impellers and Diffusers: Glass filled engineered composite material with floating impeller design. High resistance to corrosion and abrasion.
- Bowls: 300 stainless steel rabbit lock for positive alignment with no gasket required.
- Variable Capacity: Centrifugal pump permits selection of flow within a range for each size.
- Mechanical Seal: A variety of face materials and elastomers to match application needs.
- Motors: Close coupled NEMA 56J motors in open drip proof or totally enclosed design. Single phase and three phase available. Ball bearings carry all radial and axial thrust loads. Designed for continuous operation. Mechanical seal is carbon, ceramic, BUNA and stainless steel
- Stainless steel fasteners



PART NUMBER	DESCRIPTION	LIST PRICE
631-131672	PUMP, BOOSTER, 0.5HP, 0.75" NPT, 115/230V, 60HZ, 1PH, 5GPM, 9 STAGE - 5GBC05	\$830.04
631-131673	PUMP, BOOSTER, 0.75HP, 0.75" NPT, 115/230V, 60HZ, 1PH, 7GPM, 13 STAGE - 7GBC07	\$946.98
631-131674	PUMP, BOOSTER, 0.75HP, 0.75" NPT, 208-230/460V, 60HZ, 3PH, 7GPM, 13 STAGE - 7GBC0712N0	\$1,016.59
631-131675	PUMP, BOOSTER, 1.0HP, 0.75" NPT, 115/230V, 60HZ, 1PH, 7GPM, 16 STAGE - 7GBC10	\$1,116.24
631-131676	PUMP, BOOSTER, 1.0HP, 0.75" NPT, 208-230/460V, 60HZ, 3PH, 7GPM, 16 STAGE - 7GBC1015R0	\$1,385.28
631-131677	PUMP, BOOSTER, 1.5HP, 0.75" NPT, 220V, 50HZ, 1PH, 7GPM, 16 STAGE - 7GBC1521X0	\$1,330.17
631-131678	PUMP, BOOSTER, 1.0HP, 0.75" NPT, 115/230V, 60HZ, 1PH, 10GPM, 10 STAGE - 10GBC10	\$1,054.45
631-131679	PUMP, BOOSTER, 1.5HP, 0.75" NPT, 115/230V, 60HZ, 1PH, 16GPM, 15 STAGE - 10GBC1514Q0	\$1,335.69
631-131680	PUMP, BOOSTER, 1.5HP, 0.75" NPT, 220/380V, 50HZ, 3PH, 16GPM, 16 STAGE - 10GBC1522R0	\$1,376.47

Solenoids, Valves, and Gauges



120V Solenoids

Our solenoid valves work in conjunction with R Supply's plumbing supplies, gauges, and pumps, used in poultry facility and swine growing applications.



PART NUMBER	DESCRIPTION	LIST PRICE
626-131643	SOLENOID, 120V, N/C, 0.75" NPT IN/OUT, GENERAL SERVICE - 8210G009 20107	\$114.20
626-131645	SOLENOID, 120V, N/O, 0.75" NPT IN/OUT, GENERAL SERVICE - 8210G035	\$226.61
626-131647	SOLENOID, 120V, N/C 1" NPT IN/OUT, SLOW CLOSING - 8221G007 20349	\$721.75

240V Solenoids

Our solenoid valves work in conjunction with R Supply's plumbing supplies, gauges, and pumps, used in poultry facility and swine growing applications.



PART NUMBER	DESCRIPTION	LIST PRICE
626-131648	SOLENOID, 240V, N/O 1" NPT IN/OUT, SLOW CLOSING - 8221G027-240/60	\$841.52
626-131644	SOLENOID, 240V, N/C, 0.75" NPT IN/OUT, GENERAL SERVICE - 8212G009 20114	\$107.46
626-131646	SOLENOID, 240V, N/O, 0.75" NPT IN/OUT, GENERAL SERVICE - 8210G035-240/60	\$206.82

Gauges

Our gauges work in conjunction with R Supply's plumbing supplies, solenoid valves, and pumps, used in poultry facility and swine growing applications.



PART NUMBER	DESCRIPTION	LIST PRICE
645-131759	GAGE, PRESSURE, 0-15 PSI, 1/4" MPT - IM-015-20	\$6.07
645-131760	GAGE, PRESSURE, 0-30 PSI, 1/4" MPT - IM-015-20	\$6.07
645-131761	GAGE, PRESSURE, 0-60 PSI, 1/4" MPT - IM-015-20	\$6.07
645-131762	GAGE, PRESSURE, 0-100 PSI, 1/4" MPT - IM-015-20	\$6.07
645-131763	GAGE, PRESSURE, 0-160 PSI, 1/4" MPT - IM-015-20	\$6.07
645-131764	GAGE, PRESSURE, 0-200 PSI, 1/4" MPT - IM-015-20	\$6.07
645-131765	GAGE, PRESSURE, 0-300 PSI, 1/4" MPT - IM-015-20	\$6.07
645-131766	GAGE, PRESSURE, 0-400 PSI, 1/4" MPT - IM-015-20	\$6.07

Pressure Reducing Valve

Our pressure reducing valves work in conjunction with R Supply's gauges, plumbing supplies, solenoid valves, and pumps, used in poultry facility and swine growing applications.



PART NUMBER	DESCRIPTION	LIST PRICE
645-131769	VALVE, PRESSURE REDUCING, 3/4" FPT - NR3XL-3/4 WILKINS	\$95.96
645-131770	VALVE, PRESSURE REDUCING, 1" FPT - NR3XL-1 WILKINS	\$177.10

Filtration

Filter Housings

Filter housings contain the poly string filters, pleated filters, and Sno Spun filters used with the evaporative cooling systems in poultry growing facilities, hog barns, and greenhouses.



PART NUMBER	DESCRIPTION	LIST PRICE
635-131686	FILTER HOUSING, 1.5" FPT, Y-STRAINER, SS SCREEN - LS150-12 BANJO	\$90.37
635-131687	FILTER HOUSING, 2.0" FPT, Y-STRAINER, SS SCREEN - LS200-12 BANJO	\$90.37
635-131689	FILTER HOUSING, 0.75" FPT, STRAIGHT, 2.5" X 10", CLEAR BOWL, W/PRESSURE RELIEF - KS052313	\$32.08
635-131692	FILTER HOUSING, 1.0" FPT, STRAIGHT, 4.5" X 10", CLEAR BOWL, W/PRESSURE RELIEF	\$146.43
635-131693	FILTER HOUSING, 1.5" FPT, LINE STRAINER - LGFP112ESP2	\$39.80

Sun Shields

Rusco Sun Shields® inhibit algae growth within spin down filters and are recommended for algae prone systems or filters that are installed in direct sunlight for evaporative cooling systems in chicken growing facilities, pig buildings, and greenhouses.



PART NUMBER	DESCRIPTION	LIST PRICE
637-131732	SUN SHIELD, BLACK, 1.5" FILTERS - SS1.5	\$8.44

Poly String Filters

Poly string filters are used with the evaporative cooling systems in swine growing facilities, poultry barns, and greenhouses.



PART NUMBER	DESCRIPTION	LIST PRICE
636-131695	FILTER, POLY STRING, 2.5" X 10", 5 MICRON (CASE OF 50)	\$151.50
636-131696	FILTER, POLY STRING, 2.5" X 10", 10 MICRON (CASE OF 50)	\$151.50
636-131697	FILTER, POLY STRING, 2.5" X 10", 20 MICRON (CASE OF 50)	\$151.50
636-131699	FILTER, POLY STRING, 2.5" X 10", 30 MICRON (CASE OF 50)	\$151.50
636-131700	FILTER, POLY STRING, 2.5" X 10", 50 MICRON (CASE OF 50)	\$151.50
636-131701	FILTER, POLY STRING, 4.5" X 10", 20 MICRON (CASE OF 20)	\$342.20

Pleated Filters

Pleated filters are used with the evaporative cooling systems in pig growing facilities, chicken barns, and greenhouses.



PART NUMBER	DESCRIPTION	LIST PRICE
636-131703	FILTER, PLEATED, POLYESTER, 2.5" X 9.75", 50 MICRON - WPC50-975 (CASE OF 50)	\$329.00
636-131704	FILTER, PLEATED, POLYESTER, 4.5" X 9.75", 20 MICRON - WPC20FF975 (CASE OF 20)	\$374.20
636-131709	FILTER, PLEATED, HEAVY DUTY, 2.5" X 9.75", 20 MICRON - DIRT HOG - DH-S53226 (CASE OF 50)	\$349.50

Sno Spun Filters

Sno Spun filters are used with the evaporative cooling systems in hog growing facilities, poultry buildings, and greenhouses.



PART NUMBER	DESCRIPTION	LIST PRICE
636-131705	FILTER, SNO SPUN, 2.5" X 9.75" 25 MICRON (CASE OF 50)	\$128.00
636-131706	FILTER, SNO SPUN, 2.5" X 9.75" 50 MICRON (CASE OF 50)	\$128.00

Spin Down Sediment Filters

Rusco's Spin-Down® sediment filters are highly flexible filters designed to be utilized in a wide variety of applications. From household well water systems, geothermal heating, or lawn and turf, all the way to factories, livestock feeding systems, or advanced liquid cooling systems.



PART NUMBER	DESCRIPTION	LIST PRICE
637-131711	FILTER, SPIN DOWN SEDIMENT, 0.75" FPT, 1-25GPM, 60 POLYESTER MESH - 3/4-60F	\$61.84
637-131712	FILTER, SPIN DOWN SEDIMENT, 0.75" FPT, 1-25GPM, 100 POLYESTER MESH - 3/4-100F	\$61.84
637-131713	FILTER, SPIN DOWN SEDIMENT, 1" SLIP, 1-25GPM, 60 POLYESTER MESH - 1-60F	\$61.84
637-131714	FILTER, SPIN DOWN SEDIMENT, 1" SLIP, 1-25GPM, 100 POLYESTER MESH - 1-100F	\$61.84
637-131715	FILTER, SPIN DOWN SEDIMENT, 1.5" SLIP, 10-50GPM, 12 POLYESTER MESH - 1-1/2-12F	\$77.16
637-131716	FILTER, SPIN DOWN SEDIMENT, 1.5" SLIP, 10-50GPM, 24 POLYESTER MESH - 1-1/2-24F	\$81.21
637-131717	FILTER, SPIN DOWN SEDIMENT, 1.5" SLIP, 10-50GPM, 40 POLYESTER MESH - 1-1/2-40F	\$80.99
637-131718	FILTER, SPIN DOWN SEDIMENT, 1.5" SLIP, 10-50GPM, 60 POLYESTER MESH - 1-1/2-60F	\$84.05
637-131719	FILTER, SPIN DOWN SEDIMENT, 1.5" SLIP, 10-50GPM, 100 POLYESTER MESH - 1-1/2-100F	\$84.05
637-131720	FILTER, SPIN DOWN SEDIMENT, 1.5" SLIP, 10-50GPM, 140 POLYESTER MESH - 1-1/2-140F	\$84.05
637-131721	FILTER, SPIN DOWN SEDIMENT, 1.5" SLIP, 10-50GPM, 140 STAINLESS STEEL MESH - 1-1/2-140SSF	\$105.14
637-131722	FILTER, SPIN DOWN SEDIMENT, 1.5" SLIP, 10-50GPM, 500 POLYESTER MESH - 1-1/2-500F	\$87.01
637-131723	FILTER, SPIN DOWN SEDIMENT, 1.5" SLIP, 10-50GPM, 1000 POLYESTER MESH - 1-1/2-1000F	\$87.01
637-131724	FILTER, SPIN DOWN SEDIMENT, 2.0" SLIP, 18-100GPM, 24 POLYESTER MESH - 2-24F	\$131.83
637-131725	FILTER, SPIN DOWN SEDIMENT, 2.0" SLIP, 18-100GPM, 60 POLYESTER MESH - 2-60F	\$135.20
637-131726	FILTER, SPIN DOWN SEDIMENT, 2.0" SLIP, 18-100GPM, 100 POLYESTER MESH - 2-100F	\$135.20
637-131727	FILTER, SPIN DOWN SEDIMENT, 2.0" SLIP, 18-100GPM, 140 POLYESTER MESH - 2-140F	\$135.20
637-131728	FILTER, SPIN DOWN SEDIMENT TRAPPER, 0.75" FPT, 1-25GPM, 30 STAINLESS STEEL MESH - 3/4-30STSS-F	\$87.73
637-131729	FILTER, SPIN DOWN SEDIMENT TRAPPER, 1.0" SLIP, 1-25GPM, 30 STAINLESS STEEL MESH - 1-30STSS-F	\$87.73
637-131730	FILTER, SPIN DOWN SEDIMENT TRAPPER, 1.5" FPT, 10-50GPM, 30 STAINLESS STEEL MESH - 1-1/2-30STSS-F	\$110.06
637-131731	FILTER, SPIN DOWN SEDIMENT TRAPPER, 0.75" FPT, 18-100GPM, 30 STAINLESS STEEL MESH - 3/4-30STSS-F	\$180.80
637-132998	FILTER, SPIN DOWN SEDIMENT TRAPPER, 1.0" SLIP, 1-25GPM, 100 STAINLESS STEEL MESH - 1-100STSS-F	\$93.09

Plumbing

Pipes

Pipes are used in the evaporative cooling systems for swine growing facilities, poultry barns, and greenhouses.



PART NUMBER	DESCRIPTION	LIST PRICE
605-131455	PIPE, PVC, 0.75", SCHEDULE 80, GREY, 10FT LONG	\$24.58
605-131456A	PIPE, PVC, 0.75", SCHEDULE 40, WHITE, 10FT LONG	\$24.20
605-131456B	PIPE, PVE, 1.5", SCHEDULE 40, WHITE, 10FT LONG	\$27.29
605-131456C	PIPE, PVC, 2.0", SCHEDULE 40, WHITE, 10FT LONG	\$30.04
605-131457	PIPE, PVC, 8.0", PIP, BELLED END, 10FT LONG	\$142.28
605-131458	PIPE, PVC, 10.0", PIP, BELLED END, 22FT LONG	\$395.56

Ball Valves

Ball valves are used in the evaporative cooling systems for poultry growing facilities, hog barns, and greenhouses.



PART NUMBER	DESCRIPTION	LIST PRICE
605-131464	BALL VALVE, 0.5", SLIP X SLIP, PVC, SCHEDULE 80 - 9120	\$2.09
605-131465	BALL VALVE, 0.75", SLIP X SLIP, PVC, SCHEDULE 80 - 9121	\$3.74
605-131466	BALL VALVE, 1.0", SLIP X SLIP, PVC, SCHEDULE 80 - 9122	\$5.08
605-131467	BALL VALVE, 1.5", SLIP X SLIP, PVC, SCHEDULE 80 - 9124	\$8.71
605-131468	BALL VALVE, 2.0", SLIP X SLIP, PVC, SCHEDULE 80 - 9125	\$14.76

Check Valves

Check valves are used in the evaporative cooling systems for swine growing facilities, poultry barns, and greenhouses.



PART NUMBER	DESCRIPTION	LIST PRICE
605-131469	CHECK VALVE, 1.5", SLIP X SLIP, PVC, SCHEDULE 40 - 9114S	\$10.38

Caps

Reducing tees are used in the evaporative cooling systems for chicken growing facilities, pig barns, and greenhouses.



PART NUMBER	DESCRIPTION	LIST PRICE
605-131475	CAP, 0.75", SLIP, PVC, SCHEDULE 40 - 447007	\$0.82
605-131476	CAP, 1.5", SLIP, PVC, SCHEDULE 40 - 447015	\$1.18
605-131477	CAP, 8.0", PVC, PIP, SDR 91 - 280-107541	\$36.04
605-131478	CAP, 10.0", PVC, PIP, SDR 91 - 280-107542	\$51.61
605-131479	CAP, 12.0", PVC, PIP, SDR 91 - 280-107543	\$80.89
605-131480	CAP, 15.0", PVC, PIP, SDR 91 - 280-107545	\$103.47

Plugs

Plugs are used in the evaporative cooling systems for swine buildings, chicken barns, and greenhouses.



PART NUMBER	DESCRIPTION	LIST PRICE
605-131507	PLUG, 1.5", MPT, PVC, SCHEDULE 40 - 450015	\$2.58

Tees

Tees are used in the evaporative cooling systems for hog growing facilities, chicken barns, and greenhouses.



PART NUMBER	DESCRIPTION	LIST PRICE
605-131474	TEE, 8" X 8" X 8", PVC, PIP, SDR 81 - 280-102507	\$115.05
605-131482	TEE, 0.75", SLIP X FPT X SLIP, PVC, SCHEDULE 40 - 403007	\$1.28
605-131483	TEE, 1.5", SLIP X SLIP X SLIP, PVC, SCHEDULE 40 - 401015	\$1.91
605-131484	TEE, 2.0", SLIP X SLIP X SLIP, PVC, SCHEDULE 40 - 401020	\$2.55

Reducing Tees

Reducing tees are used in the evaporative cooling systems for chicken growing facilities, pig barns, and greenhouses.



PART NUMBER	DESCRIPTION	LIST PRICE
605-131470	TEE, REDUCING, 10" X 10" X 8", PVC, PIP, SDR 81 - 35217SPEC	\$120.60
605-131471	TEE, REDUCING, 12" X 12" X 8", PVC, PIP, SDR 81 - 35221SPEC	\$167.86
605-131472	TEE, REDUCING, 15" X 15" X 8", PVC, PIP, SDR 81 - 35238SPEC	\$296.43
605-131485	TEE, REDUCING, 1.5" X 1.5" X 0.75", SLIP X SLIP X SLIP, PVC, SCHEDULE 40 - 401210	\$4.10
605-131486	TEE, REDUCING, 1.5" X 1.5" X 1.0", SLIP X SLIP X SLIP, PVC, SCHEDULE 40 - 401211	\$4.10
605-131487	TEE, REDUCING, 2.0" X 2.0" X 1.0", SLIP X SLIP X SLIP, PVC, SCHEDULE 40 - 401249	\$3.00
605-131488	TEE, REDUCING, 2.0" X 2.0" X 1.5", SLIP X SLIP X SLIP, PVC, SCHEDULE 40 - 401251	\$5.05
605-131489	TEE, REDUCING, 0.5" X 0.5" X 0.125", SLIP X SLIP X FPT, PVC, SCHEDULE 40 - 121218-T	\$1.87
605-131490	TEE, REDUCING, 1.5" X 1.5" X 0.75", SLIP X SLIP X FPT, PVC, SCHEDULE 40 - 402210	\$5.00

Elbows

Elbows are used in the evaporative cooling systems for poultry buildings, pig facilities, and greenhouses.



PART NUMBER	DESCRIPTION	LIST PRICE
605-131491	ELBOW, 0.5", 90 DEGS, SLIP X SLIP, PVC, SCHEDULE 40 - 406005	\$0.35
605-131492	ELBOW, 0.75", 90 DEGS, SLIP X SLIP, PVC, SCHEDULE 40 - 406007	\$1.44
605-131493	ELBOW, 1.0", 90 DEGS, SLIP X SLIP, PVC, SCHEDULE 40 - 406010	\$0.64
605-131494	ELBOW, 1.5", 90 DEGS, SLIP X SLIP, PVC, SCHEDULE 40 - 406015	\$1.44
605-131495	ELBOW, 2.0", 90 DEGS, SLIP X SLIP, PVC, SCHEDULE 40 - 406020	\$2.30
605-131496	ELBOW, 0.75", 90 DEGS, SLIP X FPT, PVC, SCHEDULE 40 - 407007	\$0.66
605-131497	ELBOW, STREET, 90 DEGS, SP X SLIP, PVC, SCHEDULE 40 - 409007	\$1.30
605-131517	ELBOW, 8" X 8" X 22.5 DEGS, SOC X SOC, PVC, PIP, SDR 81 - 280-100355	\$45.86
605-131518	ELBOW, 8" X 8" X 45 DEGS, SOC X SOC, PVC, PIP, SDR 81 - 280-100593	\$82.98
605-131519	ELBOW, 8" X 8" X 90 DEGS, SOC X SOC, PVC, PIP, SDR 81 - 280-100813	\$126.99

Crosses

Crosses are used in evaporative cooling systems for poultry and swine facilities and greenhouses.



PART NUMBER	DESCRIPTION	LIST PRICE
605-131473	CROSS, REDUCING, 10" X 8", PVC, PIP, SDR 81 - 35023SPEC	\$121.56

Plumbing

Adaptors

Adaptors are used in the evaporative cooling systems for swine buildings, poultry facilities, and greenhouses.



PART NUMBER	DESCRIPTION	LIST PRICE
605-131503	ADAPTOR, MALE, 1.5", MPT X SLIP, PVC, SCHEDULE 40 - 436015	\$1.11
605-131504	ADAPTOR, MALE, 2.0", MPT X SLIP, PVC, SCHEDULE 40 - 436020	\$1.70
605-131511	ADAPTOR, HOSE, MALE, 0.75", MHT X SLIP, PVC, SCHEDULE 40 - MHT103	\$2.70
605-131515	ADAPTOR, FEMALE, 1.5", SP X FPT, PVC, SCHEDULE 40 - 478015	\$3.07
605-131516	ADAPTOR, BULKHEAD/TANK, 2", PVC, SCHEDULE 40 - SP1023S2	\$24.14
605-131520	ADAPTOR, MALE, REDUCING, 1.25" MPT X 1.5" SLIP, PVC, SCHEDULE 40 - 436169	\$2.47

Reducer Bushings

Reducer bushings are used in the evaporative cooling systems for hog buildings, chicken facilities, and greenhouses.



PART NUMBER	DESCRIPTION	LIST PRICE
605-131505	REDUCER BUSHING, 0.75" X 0.25", SP X FPT, SCHEDULE 40 - 438098	\$0.74
605-131506	REDUCER BUSHING, 2.0" X 1.5", SP X SLIP, SCHEDULE 40 - 437251	\$2.76

Unions

Unions are used in the evaporative cooling systems for hog buildings, poultry barns, and greenhouses.



PART NUMBER	DESCRIPTION	LIST PRICE
605-131508	UNION, 1.5", SLIP X SLIP, PVC, SMALL, SCHEDULE 40 - 457015	\$14.73
605-131509	UNION, 1.5", SLIP X SLIP, PVC, LARGE, SCHEDULE 40 - 9058	\$10.37
605-131510	UNION, 2.0", SLIP X SLIP, PVC, SCHEDULE 40 - 9059	\$12.61

Couplings

Couplings are used in the evaporative cooling systems for hog growing facilities, poultry barns, and greenhouses.



PART NUMBER	DESCRIPTION	LIST PRICE
605-131481	COUPLING, REDUCING, 10" X 8", PVC, PIP, SDR 91 - 280-100931	\$118.82
605-131498	COUPLING, 0.75", SLIP X SLIP, PVC, GREY, SCHEDULE 80 - 429-007G	\$2.03
605-131499	COUPLING, 1.5", SLIP X SLIP, PVC, SCHEDULE 40 - 429015	\$0.84
605-131500	COUPLING, 2.0", SLIP X SLIP, PVC, SCHEDULE 40 - 429020	\$0.92
605-131501	COUPLING, 8.0", SOC X SOC, PVC, PIP, SDR 81 - 280-100003	\$30.46
605-131502	COUPLING, 10.0", SOC X SOC, PVC, PIP, SDR 81 - 280-100004	\$50.54

Sill Seal

Our Building/Sill Seal responds to setting, shrinkage and warping. Years after installation, the building seal will maintain an airtight seal during expansion and contraction in varying temperatures and humidity.



PART NUMBER	DESCRIPTION	LIST PRICE
657-133612	SEAL, SILL, 3" WIDE, BLACK RUBBER POLYMER, 300FT BOX	\$305.45
657-133613	SEAL, SILL, 5" WIDE, BLACK RUBBER POLYMER, 200FT BOX	\$420.00

Hardware

Washers

PART NUMBER	DESCRIPTION	LIST PRICE
655-131870	WASHER, SPLIT LOCK, M12, ZINC PLATED	\$0.16
655-131871	WASHER, FENDER, 1/4 X 1 1/4, 18-8 STAINLESS	\$0.36
655-131872	WASHER, FENDER, 1/2 X 2, ZINC PLATED	\$0.37
655-131873	WASHER, FENDER, 5/16 X 1 1/2, 18-8 STAINLESS	\$0.33

Bolts

PART NUMBER	DESCRIPTION	LIST PRICE
610-131922	PLATE, SUPPORT, CARRAGE BOLTS, TUNNEL DOOR	\$2.16
655-131874	BOLT, LAG, HEX, 5/16 X 1 1/2, GALVANIZED	\$0.64
655-131875	BOLT, LAG, HEX, 5/16 X 3, GALVANIZED	\$0.50
655-131876	BOLT, CARRAGE, 5/16-18 X 2 1/4, ZINC PLATED	\$0.50
655-131877	BOLT, U, 1/4-20 X 1 1/8 X 2, STAINLESS, W/O NUTS	\$3.70
655-131878	BOLT, U, 5/16-18 X 2 X 2 11/16, ZINC PLATED, W/O PLATES	\$3.10
655-131879	BOLT, HEX, SPLIT, M12-1.75 X 70, ZINC PLATED	\$2.83

Nuts

PART NUMBER	DESCRIPTION	LIST PRICE
655-131880	NUT, 1/4-20, 18-8 STAINLESS	\$0.11
655-131881	NUT, NYLOK, 1/4-20, ZINC PLATED	\$0.10
655-131882	NUT, NYLOK, 5/16-18, ZINC PLATED	\$0.09
655-131883	NUT, NYLOK, M12-1.75, ZINC PLATED	\$0.33
655-131884	NUT, WING, 1/4-20 CF, 18-8 STAINLESS	\$0.43
655-131885	NUT, WING, PLASTIC, M12-1.75	\$0.20

Screws

PART NUMBER	DESCRIPTION	LIST PRICE
655-131886	SCREW, SELF DRILLING, #8 X 3/4, HEX WASHER HEAD, 410 STAINLESS	\$0.14
655-131887	SCREW, SELF DRILLING, #10 X 3/4, HEX WASHER HEAD, 410 STAINLESS	\$0.40
655-131889	SCREW, #10 X 1, SLOTTED HEX WASHER HEAD, GALVANIZED	\$0.17
655-131890	SCREW, #14 X 1 1/2, SLOTTED HEX WASHER HEAD, GALVANIZED	\$0.29
655-131891	SCREW, #14 X 1 1/2, SLOTTED HEX WASHER HEAD, 18-8 STAINLESS	\$0.44
655-131892	SCREW, CAP, HEX HEAD, 1/4-20 X 1/2, ZINC PLATED	\$0.13
655-131893	SCREW, CAP, HEX HEAD, 1/4-20 X 1/2, 18-8 STAINLESS	\$2.89

Eye Bolts

PART NUMBER	DESCRIPTION	LIST PRICE
655-131894	EYE BOLT, 2 X 1/4-20, PREASSEMBLED	\$5.77
655-132128	EYE BOLT 4 X 1/4-20	\$9.28
655-133105	EYE BOLT 2 1/2 X 1/4-20	\$5.31

Rods

PART NUMBER	DESCRIPTION	LIST PRICE
655-131895	ROD, THREADED, 1/4-20 X 3, 18-8 STAINLESS	\$6.70
655-131896	ROD, THREADED, 1/4-20 X 8, 18-8 STAINLESS	\$9.67
655-131898	BOLT, LAG, HEX, 5/16 X 1 1/2, 18-8 STAINLESS	\$0.99

Solenoid Coils

PART NUMBER	DESCRIPTION	LIST PRICE
673864	COIL, SOLENOID, 120 VAC, ASCO 238210-032-D, 3/4 IN.-20077	\$61.04
673865	COIL, SOLENOID, 240 VAC, ASCO 238210-058-D, -20085	\$61.04

Filter Bodies

PART NUMBER	DESCRIPTION	LIST PRICE
673866	BODY, TOP, BANJO FILTER, LS150-12:LS150B	\$48.29
673905	CAP, 1 1/2 IN., S X S, RUSCO 1.5B	\$40.91

O-Rings

PART NUMBER	DESCRIPTION	LIST PRICE
673867	O-RING, FOR CAP LS150, BANJO FILTER LS150-12:LS150-G	\$4.23
673870	O-RING, FILTER SCREEN, BANJO FILTER : LS141-G	\$5.19
673880	O-RING, FOR 1 IN. FILTER HOUSING, KS052641:S52749	\$3.48
673884	O-RING, SUMP, 3/4 IN. CLEAR HOUSING	\$1.75
673885	O-RING, 3/4 IN. FILTER HOUSING, WATER TECHNOLOGY FILTER: OR-4	\$2.73
673891	O-RING, LARGE UNION, PVC FITTINGS 1.5	\$1.36
673892	O-RING, 1.5 IN.UNION, PVC FITTING 40224	\$2.55
673893	O-RING, 2 IN. UNION, PVC FITTING 40228	\$1.55

Filter Screens

PART NUMBER	DESCRIPTION	LIST PRICE
673868	SCREEN, FILTER ,LS150-12, BANJO FILTER LS150-12:LS212	\$47.91
673869	SCREEN, FILTER, 20 MESH,FOR LS150-12, BANJO FILTER LS150-12:LS220	\$48.83
673873	SCREEN, 20 MESH, FOR LGFP112ES2P	\$3.75
673875	SCREEN, FILTER, 1577, 100 MESH, FOR NOZZLES	\$0.36
673911	SCREEN, FILTER, 100 MESH, 1 1/2 IN. SPIN DOWN, RUSCO: FS1-1/2-100	\$26.07
673912	SCREEN, 1 1/2 IN., 12 MESH, RUSCO: FS1-1/2-12	\$23.10
673915	SCREEN, 1 1/2 IN., 250 MESH, RUSCO: FS1-1/2-250	\$29.07
673916	SCREEN, SPIN DOWN FILTER, 1 1/2 IN., 40 MESH, RUSCO: FS1-1/2-40	\$23.91
673917	SCREEN, 500 MESH, 1 1/2 IN., RUSCO: FS1-1/2-500	\$29.07
673918	SCREEN, FILTER, 1 1/2 IN., 60 MESH, RUSCO: FS1-1/2-60	\$26.07
673919	SCREEN, 1 IN., 100 MESH, RUSCO: FS1-100	\$14.82
673920	SCREEN, FILTER, 1 IN., 250 MESH, RUSCO: FS1-250	\$16.76
673921	SCREEN, POLY FILTER, 1 IN., 500 MESH, RUSCO: FS1-500	\$16.76
673923	SCREEN,2 IN.,100 MESH, RUSCO:FS2-100-2"	\$43.05
673924	SCREEN, 140 MESH, RUSCO: FS2-140	\$43.05
673925	SCREEN, 250 MESH, RUSCO:FS2-250	\$47.57
673927	SCREEN, SD, 3/4 IN., 100 MESH, RUSCO: FS3/4-100	\$14.82

Service Parts

Bearing Inserts

PART NUMBER	DESCRIPTION	LIST PRICE
673871	BEARING INSERT, 1 IN. BORE, PILLOW BLOCK BEARING: UC205-16	\$10.59

Washers

PART NUMBER	DESCRIPTION	LIST PRICE
673872	WASHER, HOSE, 3/4 IN. (FOR 5 FT. HOSE)	\$0.18
673930	WASHER, WATER METER	\$0.69

Gaskets

PART NUMBER	DESCRIPTION	LIST PRICE
673874	GASKET, 1 1/2 IN., EPDM, FOR LGFP112112E2SP	\$1.33

Hose Clamps

PART NUMBER	DESCRIPTION	LIST PRICE
673876	CLAMP, HOSE, 8" # 200128	\$9.94

Bowls

PART NUMBER	DESCRIPTION	LIST PRICE
673904	BOWL, 3/4 IN. SPIN DOWN, RUSCO: .75C	\$31.11
673906	BOWL, 1 1/2 IN SPIN DOWN, RUSCO: 1.5C	\$46.66
673908	BOWL, FILTER,1 IN. SPIN DOWN,RUSCO: 1C	\$31.11
673910	BOWL, 2 IN. SPIN DOWN, RUSCO: 2C	\$56.04

Heads

PART NUMBER	DESCRIPTION	LIST PRICE
673878	HEAD, SUMP, FOR BENTONVILLE MBPI-1C FILTER	\$9.55

Wrenches

PART NUMBER	DESCRIPTION	LIST PRICE
673879	WRENCH, FOR 1 IN. FILTER HOUSING, KS052641:052691	\$12.27
673886	WRENCH, 3/4 IN. UNIVERSAL FILTER HOUSING, WATER TECHNOLOGY FILTER; W100	\$3.64
674041	WRENCH, FILTER HOUSING, 4.5" X 10" PWP, 3-45JHHW	\$8.27

Brackets

PART NUMBER	DESCRIPTION	LIST PRICE
674128	BRACKET, 2.5" FILTER HOUSINGS – 3-HBS1B-S	\$7.75

Housings

PART NUMBER	DESCRIPTION	LIST PRICE
673881	HOUSING, TOP, FILTER HOUSING, KS052313: S51105-T	\$33.91
673883	HOUSING, CLEAR,WITH RELIEF VALVE, 3/4 IN. IN/OUT,KS51105	\$41.27

Service Parts

Adapters

PART NUMBER	DESCRIPTION	LIST PRICE
673887	BOWL, SUMP, CLEAR, REPLACEMENT FOR BENTONVILLE MBPI-1C	\$3.27

Daubers

PART NUMBER	DESCRIPTION	LIST PRICE
673888	DAUBER, GLUE	\$26.55

Capacitors

PART NUMBER	DESCRIPTION	LIST PRICE
673889	CAPACITOR, START, 3/4 HP/230VAC LSP0712F SUMP PUMP 9L115	\$33.00
673894	CAPACITOR, START, FOR 20 IN.STIR FAN, BO75-4CAP	\$9.82
673895	CAPACITOR, START, FOR 24 IN. FAN, 1/3 HP. MOTOR, B250-4CAP	\$11.79

Kits

PART NUMBER	DESCRIPTION	LIST PRICE
673890	KIT, 3/4 IN. SEAL, KERICK VALVE SK75	\$3.79
673907	KIT, O-RING, 1 1/2 IN., RUSCO: 1.50R	\$2.65
673909	KIT, O-RING, RUSCO: 1OR	\$2.65

Ball Valves

PART NUMBER	DESCRIPTION	LIST PRICE
673903	VALVE, BALL,1/2 IN. X 1/2 IN., RUSCO: .5FV	\$12.16

Elements

PART NUMBER	DESCRIPTION	LIST PRICE
673913	ELEMENT, FILTER, FOR 1 1/2 IN. SPIN DOWN, 140 MESH, RUSCO: FS1-1/2-140	\$26.07
673914	ELEMENT,1 1/2 IN., 24 MESH, RUSCO: FS1-1/2-24	\$23.91
673922	ELEMENT, FILTER, 1 IN., 60 MESH, RUSCO:FS1-60	\$14.82
673926	ELEMENT, FILTER, 2 IN., 60 MESH, FOR SPIN DOWN FILTER, RUSCO: FS2-60	\$43.05
673928	ELEMENT, 3/4 IN., 30 MESH, STAINLESS STEEL, RUSCO: FS3/4-30SS-ST	\$21.74

Replacement Blades

PART NUMBER	DESCRIPTION	LIST PRICE
673897	BLADE, REPLACEMENT FOR 36 IN. STIR FAN, 9001481	\$78.96
673898	BLADE, REPLACEMENT, FOR 20 IN. STIR FAN, 9001484	\$35.87
673899	BLADE, REPLACEMENT, FOR 18 IN. STIR FAN, 9001487	\$28.15
673901	BLADE, REPLACEMENT, FOR 36 IN. FAN, 9001565, FOR BELT DRIVE BOX FAN	\$105.58
673902	BLADE, REPLACEMENT, FOR 48 IN. FAN, 9001567, FITS 48D750-N MOTOR	\$136.45

Keys

PART NUMBER	DESCRIPTION	LIST PRICE
673931	KEY, MASTER, WALK IN DOORS: 5116	\$2.27

Cool Cell Parts

Bolts

PART NUMBER	DESCRIPTION	LIST PRICE
673932	BOLT, LOCK, WALK IN DOORS: 5141	\$8.54

Knobs

PART NUMBER	DESCRIPTION	LIST PRICE
673933	KNOB, LOCK, SS, WALK IN DOORS: 5401	\$21.93

Hose Bibs

PART NUMBER	DESCRIPTION	LIST PRICE
608-131535	HOSE BIBB, 3/4"	\$9.07

Adhesives

PART NUMBER	DESCRIPTION	LIST PRICE
608-131538A	ADHESIVE, PVC PIPE, CLEAR, QUART - 717C-010	\$22.16
608-131538B	ADHESIVE, PVC PIPE, CLEAR, GALLON - 717C-040	\$88.46

Cleaners

PART NUMBER	DESCRIPTION	LIST PRICE
608-131537	CLEANER, PVC PIPE, QUART	\$18.73

Couplings

PART NUMBER	DESCRIPTION	LIST PRICE
608-131532	COUPLING, RUBBER, 8" X 8"	\$40.27

Caps

PART NUMBER	DESCRIPTION	LIST PRICE
608-131533	CAP, RUBBER, 8", W/CLAMP - 816RC	\$31.55

Hose Assemblies

PART NUMBER	DESCRIPTION	LIST PRICE
608-131534	ASSEMBLY, HOSE, 5FT, 0.75" FHT X FHT	\$21.72

Repair Compound

PART NUMBER	DESCRIPTION	LIST PRICE
608-131536	REPAIR COMPOUND, PVC PIPE	\$62.53



Terms and Conditions

R Supply reserves the right to change prices without notice at any time.

No minimum order– we appreciate them all.

Stock Item orders are shipped within 24 hours F.O.B. Franklin, Ga. Freight shipping and handling charges will be added to the invoice.

Any expenses incurred in collecting past due balances will be added to debtors account and the debtor agrees to pay such charges.

Warranty

R Supply strives to make quality the key to our product line. Certain items have their own warranty from the manufacturer which we will gladly honor. Any item marked by R Supply that is not covered under factory warranty is guaranteed for 90 days from date of purchase to be free of defects under normal use and service.

Limitation Of Liability

L.B. White LLC, D.B.A. R Supply shall not under any circumstances be liable for special consequential damage such as, but not limited to, damage or loss of other property or equipment, loss of profits or revenue, cost of capital, cost of purchased or replacement goods, or claims of customers in our initial purchase. The herein, are exclusive, and the liability of R Supply with respect to same shall not, except as expressly provided herein, exceed the price of the goods upon which such liability is based.



170 Frost Street, Franklin, GA 30217
Toll Free: (888) 854-5221
Phone: (770) 854-5221
Fax: (770) 854-6365
shop.r-supply.com

