

INSTALLATION INSTRUCTIONS



Bird Guard For Cool Cells

View these instructions online at www.lbwhite.com

Kit Contents:

DESCRIPTION	QTY.
Instruction, Installation	1
End Cap	2
#10-1 Self Tapping Screws	12

Kits:

652-134506	End Cap and Screws
652-134507*	Panel and Screws

* Sold separately

Tools required:

- Drill
- 5/16" Driver Bit
- Metal Saw

Qualifications for installation:

- You must be able to read and understand these instructions.

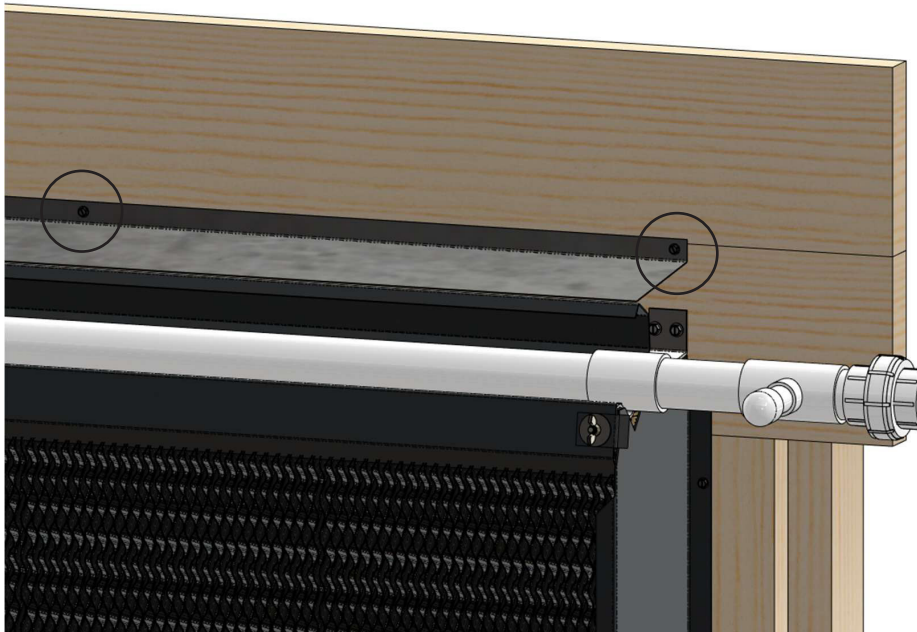
Installation Instructions:

- Verify that you have sufficient 10' top panels to cover the entire length of the cool cell. If additional coverage is needed, purchase extra 652-134507 kits to span the full distance. Leave an overhang at the end of the last top panel, which will later be trimmed to fit flush.

Installation:

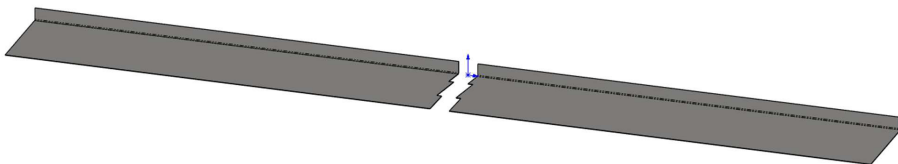
- Position the top panel flush with the right edge of the side panel on the cool cell. Ensure the bird guard sits securely on top of the cool cell. Using a drill with a 5/16" hex bit, install the first self-tapping screw 1" from the end in the center of the mounting strip, fastening it to the wood wall. Then, move to the opposite end of the panel. See Fig. 1.

FIG. 1



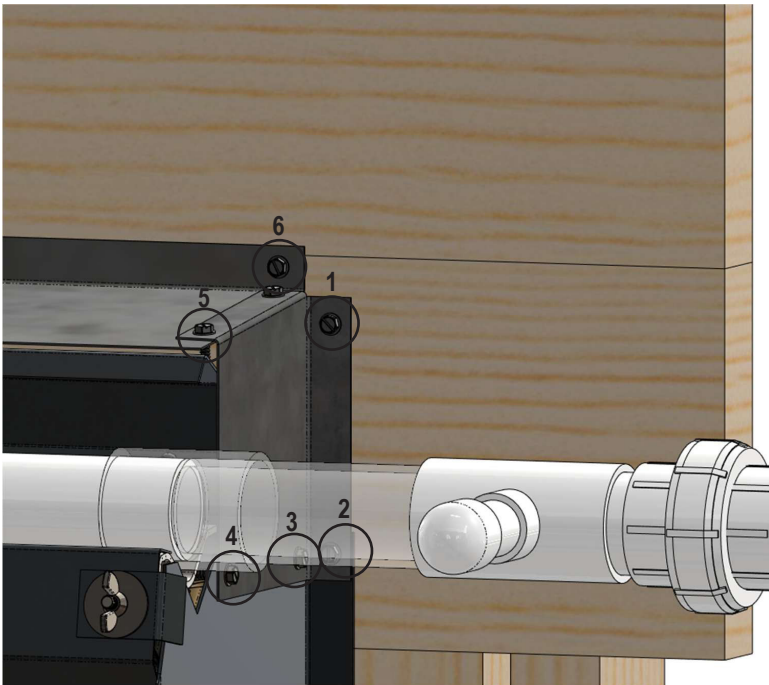
- Install the second screw 1" from the opposite end of the panel and secure it to the wood wall. Evenly space the remaining screws along the mounting strip, fastening the panel securely to the wood wall.
- Align the next panel with the end of the previous panel and repeat Step 3. Continue this process until you reach the end of the cool cell.

FIG. 2



- Trim or overlap the final top panel to ensure it fits flush with the side panel. If you overlap, make sure the mounting screw goes through both the top panels to the wall.
- Once the panels cover the entire cool cell and are flush on both ends, mount the 652- 134506 end caps (only one kit is required per cool cell).
- Place the end cap over the top panel, applying these steps on both sides. Hold it firmly in place, and using a drill with a 5/16" hex bit, install two self-tapping screws to secure the back of the panel to the wood wall at the center of the mounting strip.
- Using the same drill and bit, attach the bottom of the end cap to the side panel of the cool cell with two self-tapping screws. Finally, secure the overlap of the end cap to the top panel with two additional self-tapping screws.

FIG. 3





**WORLD PROVIDER - INNOVATIVE
CLIMATE SOLUTIONS**

411 Mason Street, Onalaska, WI 54650
800-345-7200 • 608-783-5691
608-783-6115 (fax)

www.lbwhite.com