

# INSTALLATION INSTRUCTIONS



## FOREMAN 500/750 16 in. Duct Adapter

Kit: 500-30902

View these instructions online at [www.lbwhite.com](http://www.lbwhite.com)

### **! WARNING**

#### **Burn Hazard**

- Heater surfaces are hot for a period of time after the heater has been shut down.
- Allow the heater to cool before performing service, maintenance, or cleaning.
- Failure to follow this warning will result in burns causing injury.

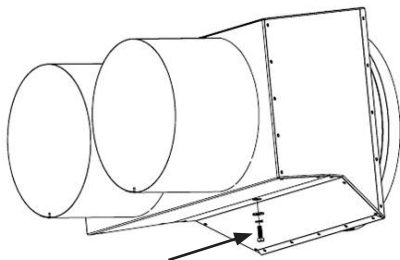
### Kit Contents:

DESCRIPTION	QTY.
Instruction, Installation	1
Duct Adapter	1
Screw, Hex Head, 5/16-18 x 1 in.	1
Washer, Flat, 5/16	1
Washer, Split, Lock, 5/16	1
Nut, Lock, 5/16-18	1

### Installation:

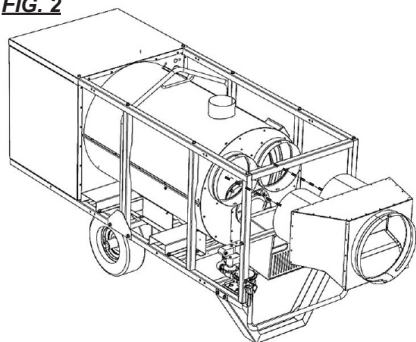
1. Remove the nut, screw, and washers from the duct adapter. Save them to be used later. See Fig. 1

**FIG. 1**



2. Slide the two round ducts of duct adapter onto the heater discharge openings as shown in Fig. 2.

**FIG. 2**

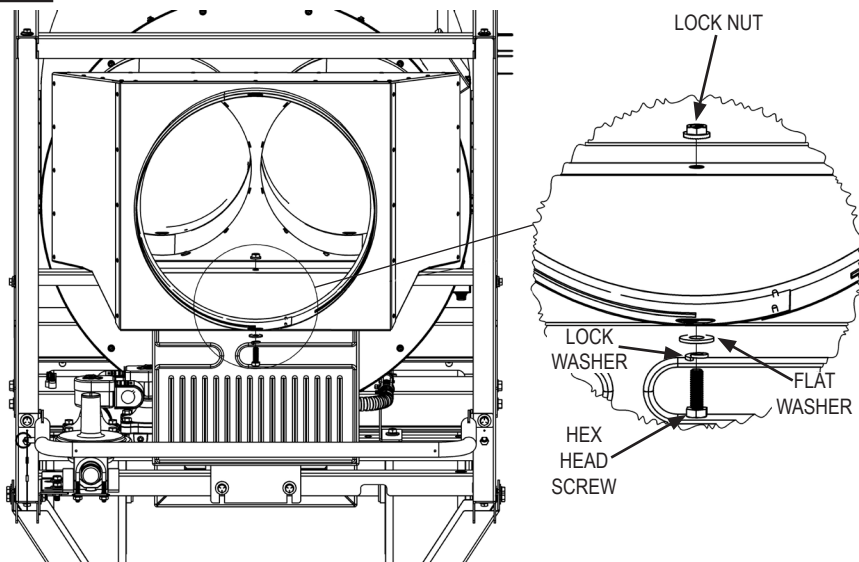


### Tools required:

- 1/2 in. nut driver OR 1/2 in. wrench

3. Align the duct adapter hole with heater frame and use the nut, screw, and washers removed earlier to secure the duct adapter to heater frame. See Fig. 3.
4. Tighten the screw and nut to secure the duct adapter to the heater frame.

**FIG. 3**



## Service

Contact your local L.B. White dealer for replacement parts and service. You may also call the L.B. White Co., LLC at 1-800-345-7200, for assistance, or email us at [customerservice@lbwhite.com](mailto:customerservice@lbwhite.com).

Be sure that you have your heater model number and configuration number when calling.



**WORLD PROVIDER - INNOVATIVE  
HEATING SOLUTIONS**

411 Mason Street, Onalaska, WI 54650

800-345-7200 • 608-783-5691

608-783-6115 (fax)

**[www.lbwhite.com](http://www.lbwhite.com)**