

Issue:

The Maxitrol 325-3 regulator DOES NOT contain an inlet debris screen. During conversion of a building from LP gas to natural gas, plumbing work will be required on the supply pipe to the building. This work can entail pipe or pipe connections to be broken, increased, or replaced. This action can cause debris or other contaminants to enter the gas piping system. See FIG. 1 & FIG. 2. If this debris makes its way to the Maxitrol regulator, it can cause the regulator to fail and allow full system pressure to the inlet of the heater.



FIG. 1

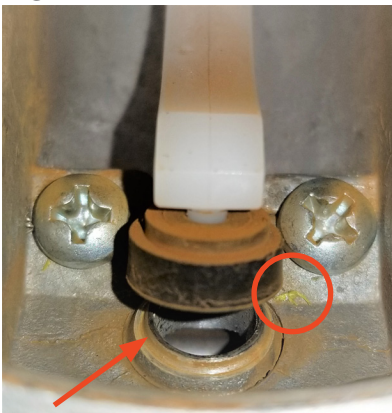
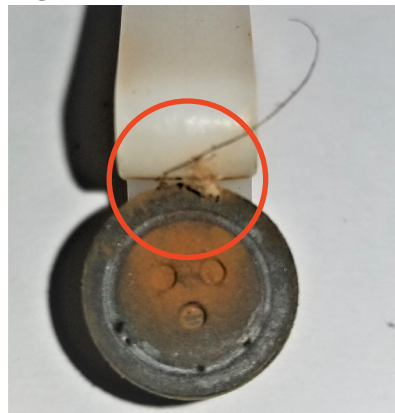
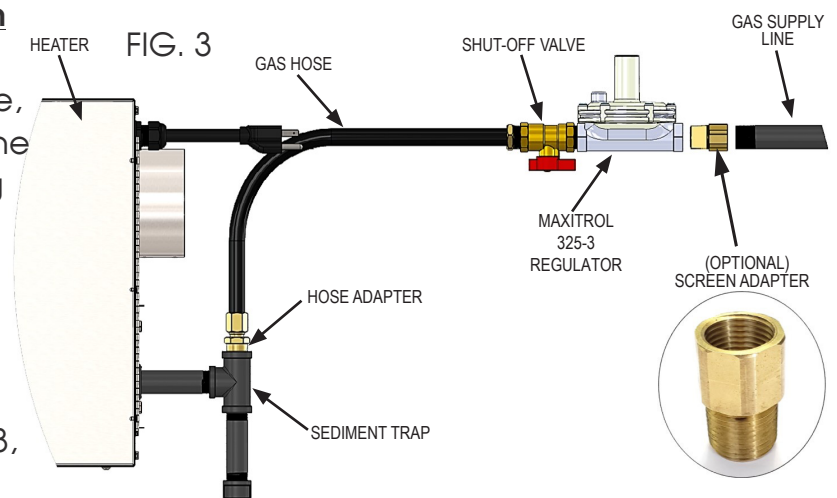


FIG. 2



If this happens, the gas valve **will not open** and the heater will not function (3 flash code will be displayed). To avoid this issue, ALL regulators should be removed from the gas piping system. Once all the plumbing work has been completed, the ENTIRE piping system should be thoroughly blown out with high pressure air. The regulators can now be reinstalled as shown in Fig. 3.

An optional screen adapter, LBW# 574063, can be installed before the regulator to improve filtration. See FIG. 3 for detail.



Failure to follow these directions will cause the regulator to fail and it will not be covered by the L.B. White Co., LLC warranty policy.