

INSTALLATION INSTRUCTIONS



Gas Conversion Kit High Pressure Zone Controlled Modulating Brooder

View these instructions online at www.lbwhite.com

Kit Contents:

DESCRIPTION	QTY.
Valve Body Assembly	1
Instruction	1
Disk, clearance	1
Orifice*	1

* Depending on design of the brooder, orifice may be installed in valve body.

Tools required:

- Phillips screwdriver
- Adjustable wrench
- 1/4" nut driver
- 5/16" nut driver

Qualifications for installation of the kit:

You must be able to read and understand these instructions before beginning.

You must be properly trained and qualified to:

- Service and repair gas fired heaters
- Make the conversion
- Test fire the heater for proper operation

General Information:

• The following instructions are for gas conversion of a High Pressure Zone controlled Modulating brooder.

A. Preparation

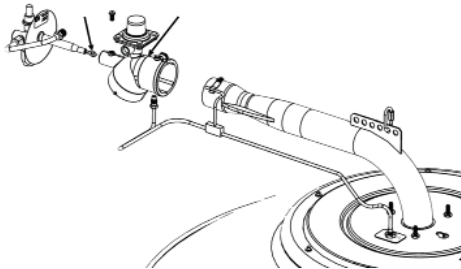
1. Ensure 5 PSIG gas pressure is supplied to the zone panel and to the heaters. Appropriate LP or natural gas regulators must be installed.
2. Close fuel supply valves and allow heater to cool.
3. Remove filter.
4. Clean the filter and heater. Use pressurized air.

B. Conversion

I-17C / I-40A models

1. Replace the orifice and air housing assembly on brooder with similar components from kit. See Fig. 1A.

FIG. 1A



-- The air housing assembly contains an orifice and an air inlet register plate. This plate controls proper air flow for the fuel gas being converted to.

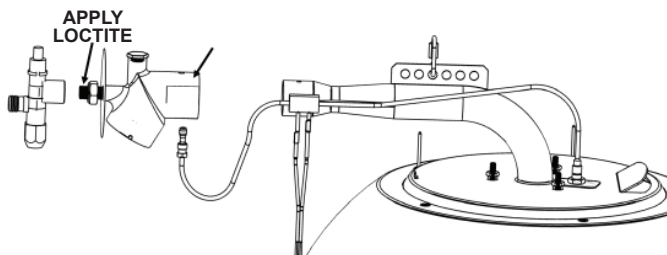
-- The air register plate for LP gas is larger in diameter than the register plate for natural gas.

2. Reassemble and securely tighten all connections.

I-17D / I-40B models

1. Remove the air housing assembly from the brooder. See Fig. 1B

FIG. 1B



2. Apply a soft flame to the body of the safety control valve where it threads to the air housing. This will soften the thread sealant which is factory applied to the air housing threads.
3. Turn the safety control counterclockwise to remove it from the air housing.

When reassembling:

-- Ensure the o-ring is seated in jam nut.

-- Apply Loctite (supplied with kit) to first four threads of air housing.

-- Thread the safety control valve onto the air housing at least four full turns, and as needed to allow the valve to be installed in an upright position.

-- Thread the jam nut hand tight against the body of the safety control and secure in place with a wrench.

C. Completion

1. Install the filter.
2. Ensure proper hanging configuration. See owner's manual for proper hanging instructions.
3. Open fuel supply valves and light the heaters.
4. Leak check using approved leak detectors.
5. Set the second stage regulator to ensure proper gas supply pressure to all heaters in the zone. Check gas pressure at maximum and minimum heat output. Refer to dataplate on heater or zone panel.
6. Check all heaters for proper operation.
7. Contact your distributor or L.B.White Co. if you have any questions.

Service

Contact your local L.B. White dealer for replacement parts and service. You may also call the L.B. White Co., LLC at 1-800-345-7200, for assistance, or email us at customerservice@lbwhite.com.

Be sure that you have your heater model number and configuration number when calling.



**WORLD PROVIDER - INNOVATIVE
HEATING SOLUTIONS**

411 Mason Street, Onalaska, WI 54650

800-345-7200 • 608-783-5691

608-783-6115 (fax)

www.lbwhite.com