

Oval 80[®] v.2 & Oval 80[®] HP Radiant Tube Heater Specifications



Oval 80[®] v.2 & Oval 80[®] HP Radiant Tube Heaters

| Model Numbers | NEW Oval 80 [®] v.2 | NEW Oval 80 [®] HP |
|--|---|------------------------------------|
| Maximum Input (Btu/h): Single Stage | 80,000 | 80,000 |
| Tube Length (ft.): | 20 | 20 |
| Gas Supply Pressure Acceptable for the Purpose of Input Adjustment - Propane (max/min) - Natural Gas (max/min) | 13.5/11.0 in. W.C. 13.5/7.0 in. W.C. | 5.0 PSIG 5.0 PSIG |
| Fuel Consumption (max.): - Liquid Propane Gas (lbs./hr.) - Natural Gas (cu. ft./hr.) | 3.7 80 | 3.7 80 |
| Ventilation (CFM): | 140 | 140 |
| Spark Ignition: | Yes | Yes |
| Temperature Controls Available: - Individual Thermostat Control - Wired to House Environmental Control | Yes Yes | Yes Yes |
| Electrical Requirements (Volts / Hz / Phase): | 115 / 60 / 1 | 115 / 60 / 1 |
| Minimum Clearance to Combustibles (ft.): - Top - Side - Discharge End - Below Radiant Tubes | 1 2.5 6 5 | 1 2.5 6 5 |
| Heater Case Dimensions (in.): - Height - Width - Length | 9.75 16 25.5 | 9.75 16 25.5 |
| Net Weight (lbs.): | 81 | 81 |
| Shipping Weight (lbs.): | 350* | 350* |
| Reflector Material: | Polished Aluminum | Polished Aluminum |
| Tube Material: | Calorized Steel | Calorized Steels |
| 3/8" x 6' Gas Hose: | S | S |
| Hanging Hardware: | S | S |
| Regulator: | O | O |
| Piping Hardware, including gas shutoff: | O | O |
| Air Inlet Kit | O | O |
| Product Warranty | S: 10 years for tube/3 years for burner box | |

*Shipped in sets of 4

Heaters ship standard to run at 0-2000 feet. To operate at higher altitudes, please note in order process to allow for appropriate deviation.

S = Standard
O = Optional



**NEW PRODUCT
BETTER DESIGN**



ONLINE RESOURCES

Visit www.lbwhite.com for frequently asked questions, owners manuals, maintenance videos, and dealer login access for open orders and recent invoices.

CA RESIDENTS:



Cancer and reproductive harm. See www.P65Warnings.ca.gov.



Innovative Climate Solutions

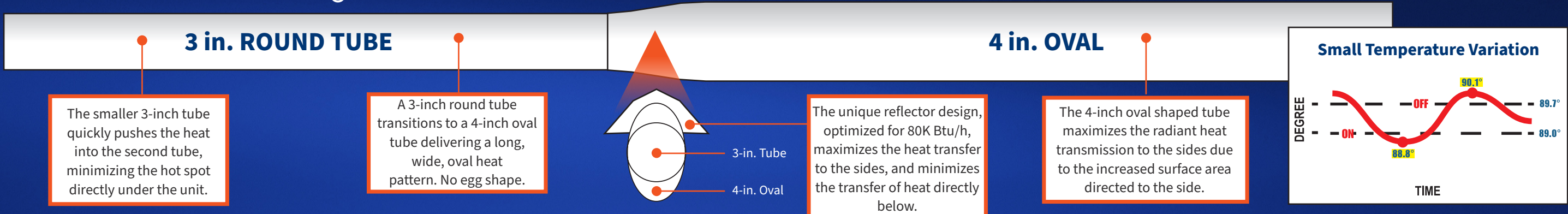
411 Mason Street, Onalaska, WI 54650
800 345 7200 (toll free) or 608 783 5691
608 783 6115 (fax)
info@lbwhite.com | www.lbwhite.com

Your L.B. White Dealer:

© 2020 L.B. White Company
All rights reserved.
All specifications are subject
to change without notice.

800-345-7200 / 608-783-5691
www.lbwhite.com

All the Great Features of the Original Model!

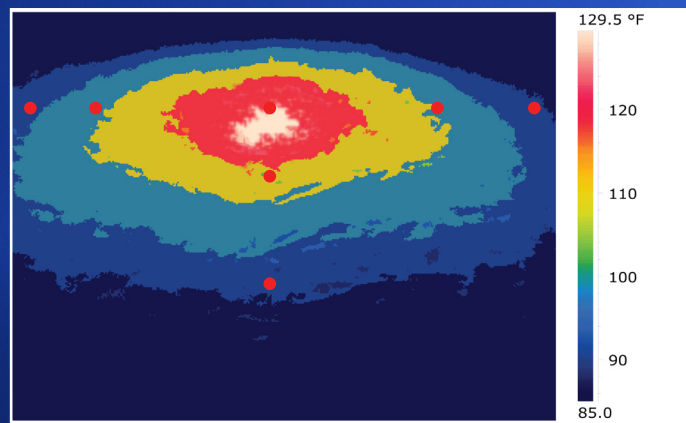


Still Easy to Install!

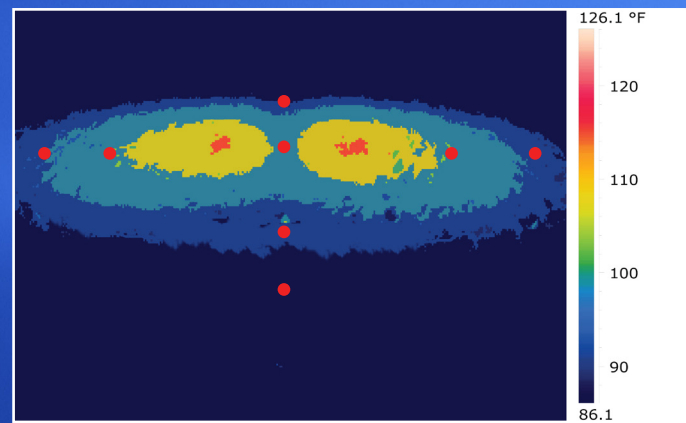
Oval 80 v.2 & HP radiant heaters are 100% test fired at the factory and come with all the components you need for easy installation.



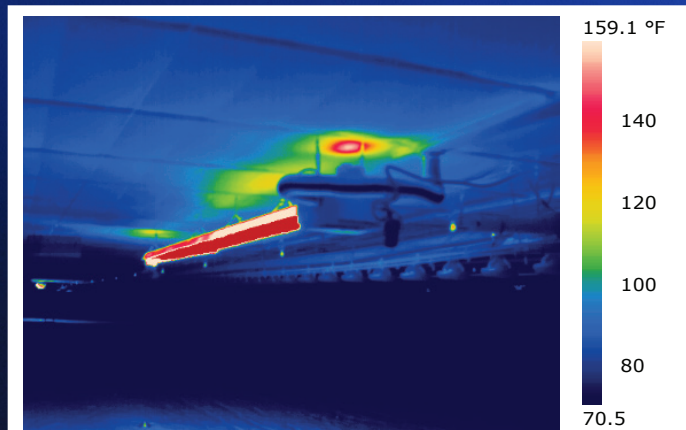
Still More Heat to the Floor / Cooler Ceiling Temperature



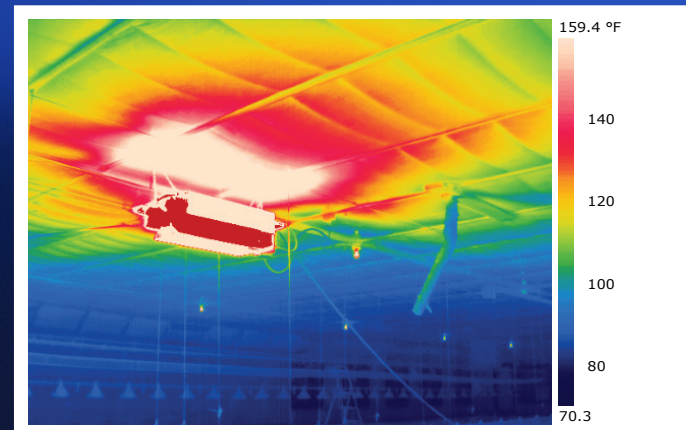
Oval 80s have longer, oval heat pattern.



Competitive Unit



Oval 80s' ceiling temperatures = 133°F. No need for insulation board above heater.



Competitive Ceiling Temperature (Max.) = 190.6°F.

Now Easier to Use and Maintain!



Application - Example Heater Placement

