

Sentinel[®] v.2 Radiant Tube Heater Specifications



Sentinel[®] v.2
Radiant Tube Heater

100
125
150

Model Numbers:	Sentinel v.2 100-30	Sentinel v.2 100-40	Sentinel v.2 125-30	Sentinel v.2 125-40	Sentinel v.2 125-50	Sentinel v.2 150-40	Sentinel v.2 150-50
Rating:							
- Max Input (Btuh) Single Stage	100,000	100,000	125,000	125,000	125,000	150,000	150,000
Tube Length (ft.)	30	40	30	40	50	40	50
Minimum Installation Height (ft.)	6	6	6	6	6	6	6
Spark Ignition	Yes	Yes	Yes	Yes	Yes	Yes	Yes
Fuel Consumption (max.):							
- Liquid Propane Gas (lbs./hr.)	4.6	4.6	5.8	5.8	5.8	6.9	6.9
- Natural Gas (cu. ft./hr.)	100	100	125	125	125	150	150
Ventilation required for combustion (CFM)	140	140	140	140	140	140	140
Inlet Gas Supply Pressure							
- LP Gas min. / max. (in. W.C.)	11.0 - 13.5	11.0 - 13.5	11.0 - 13.5	11.0 - 13.5	11.0 - 13.5	11.0 - 13.5	11.0 - 13.5
- Natural Gas min. / max. (in. W.C.)	7.0 - 13.5	7.0 - 13.5	7.0 - 13.5	7.0 - 13.5	7.0 - 13.5	7.0 - 13.5	7.0 - 13.5
Electrical Supply (Volts / Hz / Phase):	115 / 60 / 1	115 / 60 / 1	115/60/1	115/60/1	115/60/1	115/60/1	115/60/1
Min Clearance to Combustibles (ft.)							
- Top	1	1	1	1	1	1	1
- Side	6	6	6	6	6	6	6
- Below	6	6	6	6	6	6	6
Reflector Material	Polished Aluminum	Polished Aluminum	Polished Aluminum	Polished Aluminum	Polished Aluminum	Polished Aluminum	Polished Aluminum
Tube Material	Calorized Steel	Calorized Steel	Calorized Steel	Calorized Steel	Calorized Steel	Calorized Steel	Calorized Steel
Heater Case Dimensions (in.):							
- Length	25.5						
- Width	16						
- Height	9.75						
Net Weight (lbs.)	166	198	166	198	230	198	230
Shipping Weight (lbs.)	218	250	218	250	282	250	282
1/2" x 6' Gas Hose	S	S	S	S	S	S	S
Regulator	O	O	O	O	O	O	O
Gas Cock and Piping Hardware	O	O	O	O	O	O	O
Hanging Hardware	S	S	S	S	S	S	S
Air Inlet	O	O	O	O	O	O	O
*Option to vent to the outside	Yes	Yes	Yes	Yes	Yes	Yes	Yes
CSA Canadian Certified	Yes	Yes	Yes	Yes	Yes	Yes	Yes
Product Warranty	Yes: 10 years for tubes/3 years for burner box						

Heaters ship standard to run at 0-2000 feet. To operate at higher altitudes, please note in order process to allow for appropriate deviation.
* Venting material must be purchased separately from outside source.

S = Standard
O = Optional

NOW AVAILABLE IN CANADA



WARRANTY

10 year warranty for tubes
& 3 year warranty for burner boxes
on all V.2 Radiant Tube Heaters



ONLINE RESOURCES

Visit www.lbwhite.com for frequently asked questions, owners manuals, maintenance videos, and dealer login access for open orders and recent invoices.

CA RESIDENTS:

WARNING

Cancer and reproductive harm. See www.P65Warnings.ca.gov.



Innovative Climate Solutions

411 Mason Street, Onalaska, WI 54650
800 345 7200 (toll free) or 608 783 5691
608 783 6115 (fax)
info@lbwhite.com | www.lbwhite.com

Your L.B. White Dealer:

© 2024 L.B. White Company
All rights reserved.
All specifications are subject
to change without notice.

800-345-7200 / 608-783-5691
www.lbwhite.com

Sentinel[®] v.2 Radiant Poultry Heater

Maximum Heating Efficiency and Better Heat Pattern



L.B. White's Sentinel v.2 maximizes the radiant heat energy to where it is most needed: to the birds, with minimal waste to convection.

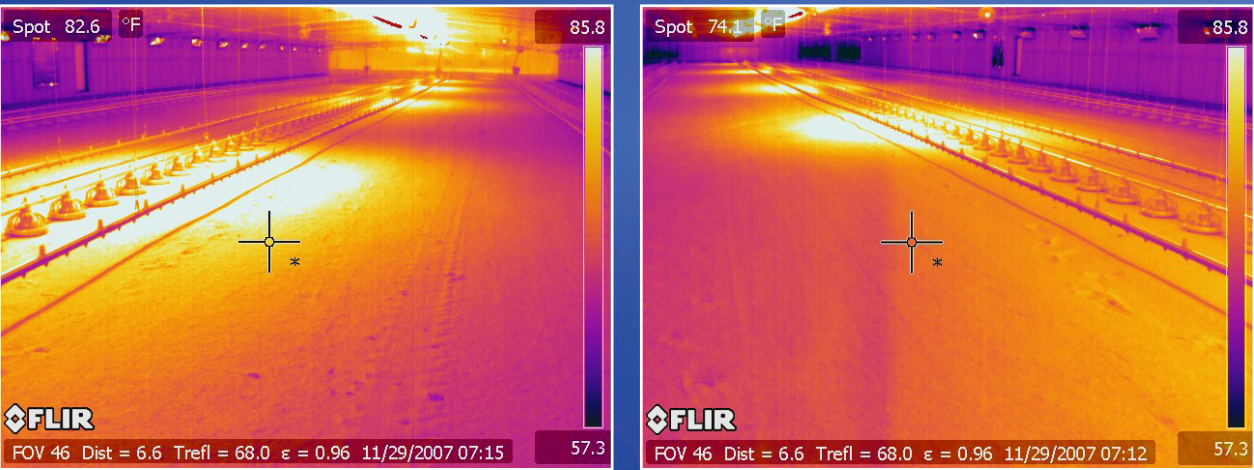
- Advanced reflector design delivers better heat distribution across the floor to the sidewall
- Pressurized burner technology delivers more even heat over the length of the heater.

Safe, Reliable Performance

The Sentinel shares the same quality design standards that have earned L.B. White its reputation as the leader in poultry forced air heating and radiant heating. The Sentinel provides the rugged durability to stand up to years of safe, reliable use in harsh confinement environments. And all Sentinels meet or exceed ANSI and CSA standards for safety.

Sentinel Infrared Heat Imaging

The Sentinel v.2 tube heater delivers significantly more radiant heat to the ground than competitive tube heaters that are not specifically designed for poultry environments.



Quick & Easy Service Access to Burner Box

Easy Maintenance

The L.B. White Sentinel radiant tube heaters provide the utmost ease in operation and maintenance over the life of the heater. The burner box door is positioned on the bottom for drop-down access to vital components. Installation is a breeze with interlocking tubes parts of the complete installation kit.

- Allows for work on heater from under the unit where there is the most room
- Access to components with latches, tools not needed
- Components are accessible and easy to replace



Easy to Use and Maintain!



Gas valve with higher durability



Easier access service panel for gas control valve



Easier-to-remove componets



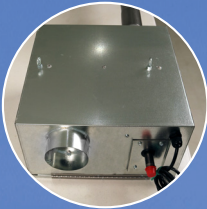
Brighter, easier-to-see indicator lights



More secure latching system



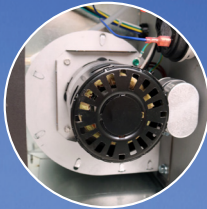
New valve mounting bracket



Air inlet relocated to follow heater tubes



Removable motor mount panel



Rotated fan housing for easier reach



New air outlet duct

Radiant Tube Heat Pattern Comparison

Model	Sentinel v.2 Heater	Competitive Heater
Input Rating	100,000 Btu/h	100,000 Btu/h

