

INSTALLATION INSTRUCTIONS



Maxitrol Regulator RV Series Burner Pressure Setting

View these instructions online at www.lbwhite.com



WARNING

Fire or Explosion Hazard

- Disconnect power supply to the heater.
- Turn off gas supply to the heater before starting.
- If applicable, always install a sediment trap in gas supply line.
- Failure to follow these warning can cause property damage, severe injury, or death.

Kit Contents:

DESCRIPTION	QTY.
Instructions, Installation	1
Maxitrol RV Series Regulator	1

Tools required:

- 0-30 in. W.C. gas manometer
- Rubber hose
- 1/8 in. NPT hose barb
- 3/16 hex head wrench
- Small slotted screwdriver
- Standard slotted screwdriver

KIT DESCRIPTION	KIT. NO.
Regulator, 8-13.5 in. Inlet, 1 in. NPT	573578
Regulator, 3/4 in. NPT, In/Out	573962
Regulator, Low Pressure, LP, Bloom 400	574072
Regulator, 2nd-Stage, DF, 1-1/4 NPT In/Out	574598
Regulator, 2nd-Stage, DF 2 in NPT In/Out	574614

Qualifications:

- You must be able to read and understand these instructions.
- You must be properly trained and qualified to:
 - o Service and repair gas fired heaters.
 - o Test fire the heater for proper operation.

Important:

- Always apply approved PTFE tape or piping compound to all connections.
- Tighten all connections securely.
- The supplied regulator is NOT pre-set at the factory. See outlet pressure on the heater nameplate.
- Setting the regulator outlet pressure will be required.
- The specifications given in this instructions do not include normal manufacturing tolerances. Therefore, some minor differences in performance can be expected.
- See nameplate for supply gas pressure to the inlet of the heater regulator.

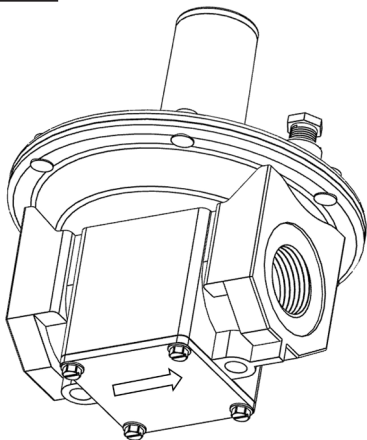
Initial Preparation:

- Clean the area around the regulator.
- Disconnect the gas supply hose from the heater.
- Remove the defective regulator from the gas train assembly per owner's manual instructions.

Installation

1. Install the new regulator to the gas train per gas flow arrow shown under the regulator. See Fig. 1.

FIG. 1



2. Connect the gas supply hose to the heater.
3. Turn ON gas supply to the heater.
 - Leak check all connections with an approved leak detector.

Barb Fitting Connection

Foreman & Journeyman

1. Locate the brass pressure barb on the gas train assembly. See Fig. 2, Foreman heater shown.

FIG. 2



2. Using a small slotted screwdriver, loosen the screw within the pressure barb.
3. Connect the gas manometer and rubber hose to the pressure barb.
4. Proceed to Regulator Pressure Setting section.

Bloom & Boss

1. Locate the hex plug on one of the gas solenoid. See Fig. 3, Boss 1000 heater shown.

FIG. 3

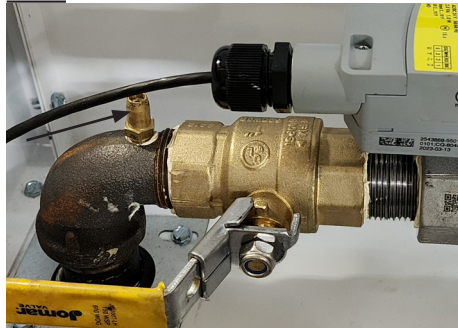


2. Using a 3/16 hex key, remove the plug. Save the plug to be use later.
3. Install the 1/8 in. NPT barb to the solenoid.
4. Connect the gas manometer and rubber hose to the pressure barb.
5. Proceed to **Regulator Pressure Setting** section.

Commander

1. Locate the pressure barb on the elbow of the gas train assembly as shown in Fig. 4.

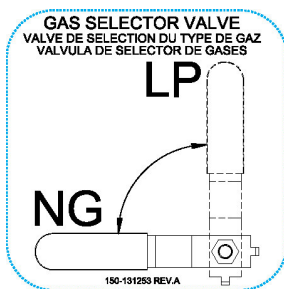
FIG. 4



2. Loosen the slotted screw inside the fitting by turning it counterclockwise a few turns. DO NOT completely remove the screw.
3. Attached your gas manometer hose to the barb fitting.
4. Proceed to **Regulator Pressure Setting** section.

Regulator Pressure Setting

1. Turn ON the gas manometer.
2. Put the gas selector valve, if applicable, in the correct gas position. Foreman shown.



3. Remove the regulator silver cap to access the adjustment screw.
4. Turn the heater ON.
5. Adjust the inlet pressure per heater dataplate.
6. Allow the heater to operate normally.
 - a. **Commander**
 - i. Set the Direct Fire Control (DFC) discharge temperature to the highest setting before adjusting the max. burner pressure.
7. Adjust the burner gas pressure per heater nameplate by either turning the regulator adjustment screw clockwise to increase or counter-clockwise to decrease the burner pressure.
8. Once the burner pressure is set, install the silver cap back onto the regulator.

Completion

1. Turn off the gas supply to the heater.
2. Allow the heater to burn off remaining fuel in the gas line.
3. Turn the heater off. If the heater has a cool down cycle, allow it to finish before disconnecting the power supply.

Commander, Foreman & Journeyman

- Remove the rubber hose from the barb fitting and tighten the screw inside the barb fitting.

Bloom & Boss

- Remove the rubber hose from the barb fitting.
- Remove the barb fitting from the solenoid.
- Install the hex plug removed perviously.

5. Reconnect the heater to its electrical supply and start the heater.
6. Check for proper heater operation. Ensure the supply gas pressure to the heater is within the nameplate specification.

Service

Contact your local L.B. White dealer for replacement parts and service. You may also call the L.B. White Co., LLC at 1-800-345-7200, for assistance, or email us at customerservice@lbwhite.com.

Be sure that you have your heater model number and serial number when calling.



**WORLD PROVIDER - INNOVATIVE
HEATING SOLUTIONS**

411 Mason Street, Onalaska, WI 54650
800-345-7200 • 608-783-5691
608-783-6115 (fax)

www.lbwhite.com