



L.B.WHITE®

Event Heating Solutions

Products within brochure are subject to the following warning for CA residents:

 **WARNING**
Cancer and reproductive harm. See www.P65Warnings.ca.gov.

LBWhite.com/event

The L.B. White Difference

A Tradition of Quality

For over 70 years L.B. White has been America's leading portable heat designer. With Midwestern manufacturing expertise we stand behind our craftsmanship, too—products are backed with a limited warranty.

Built to Last

L.B. White products are engineered to holdup to years of use. Robust materials and careful workmanship combine in heavy-duty features, like:

- Fully welded heat exchangers
- Powder coated protective frames
- Tri-shield™ coated cases

Trusted Brand

Voted best heating & cooling supplier by inTents magazine readers in the event and tent industry for five years running.



Step 1

Measure the length, width and height of the interior of the tent space.

Multiply space length x width x height to determine total cubic feet.

Example:

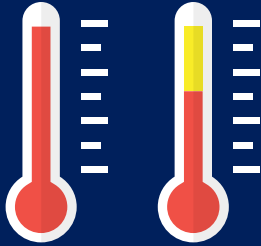
$$35 \times 20 \times 75 = 52,500 \text{ cu ft}$$



How much heat do I need?

Step 2

Determine desired rise in temperature.



Desired Temp
in Space:
70° F

Estimated Temp
in Space:
50° F

Example:

Space is 50°F, desired temperature is 70°F
 $70^{\circ}\text{F} - 50^{\circ}\text{F} = 20^{\circ}\text{F}$ rise in temperature

Desired Rise in Temp: 20° F

Step 3: Estimate

Use our BTU chart or app
to estimate BTU/hr needed.
See chart on back page.

Need to estimate heat on-the-go?

It's easy and free to use our heat estimator as an app on your mobile device. Share at not cost with your entire team!

Check out our quick heat estimator at
www.LBWhite.com/HeatEstimator.



Scan the QR code with your
smartphone's camera for
instructions on how to
download the L.B. White Heat
Estimator App

An average height
better represents the
actual need for heat
in a space that is not
square.

For example:
30 ft tent peak and
10 ft side walls =
20 ft average height

20 ft

75 ft



Premier® Heaters



For over 25 years the clean look, quiet operation, and safe, trouble-free design of Premier® heaters have been an industry favorite for heating events. From elegant weddings to company parties, you can count on Premier® heaters to maintain a comfortable temperature while going virtually unnoticed by guests.

Reliable

Over the years Premier® heaters have become an event industry favorite for being notoriously easy to setup, operate, and maintain. Set it and forget it during the event.

Clean Look

A proprietary Tri-shield™ coated white case makes Premier® heaters rust resistant, easy to clean, and a color that blends in with many tent structures.

Quiet Operation

Premier® heaters operate at a noise level of less than 70 Db, which is no louder than average noise in an office, so go virtually unnoticed by guests.

Versatile Set-Up

- Rated for indoor and outdoor use—direct fired so does require 1 sq. inch of exchange air for every 1000 BTU of heater output
- Duct and diffusing options allow heated air to be distributed inside the tent with Premier setup outside
- Distribute heat from Premier 350 inside the tent, too, with perforated duct option



Thermostatic Control Convenience

Every Premier® heater is shipped with a thermostat that allows the environmental temperature to be selected and maintained automatically when in operation. Use with an extension cord of your choice to setup and use remotely as well.



Fast Magnetic Connection

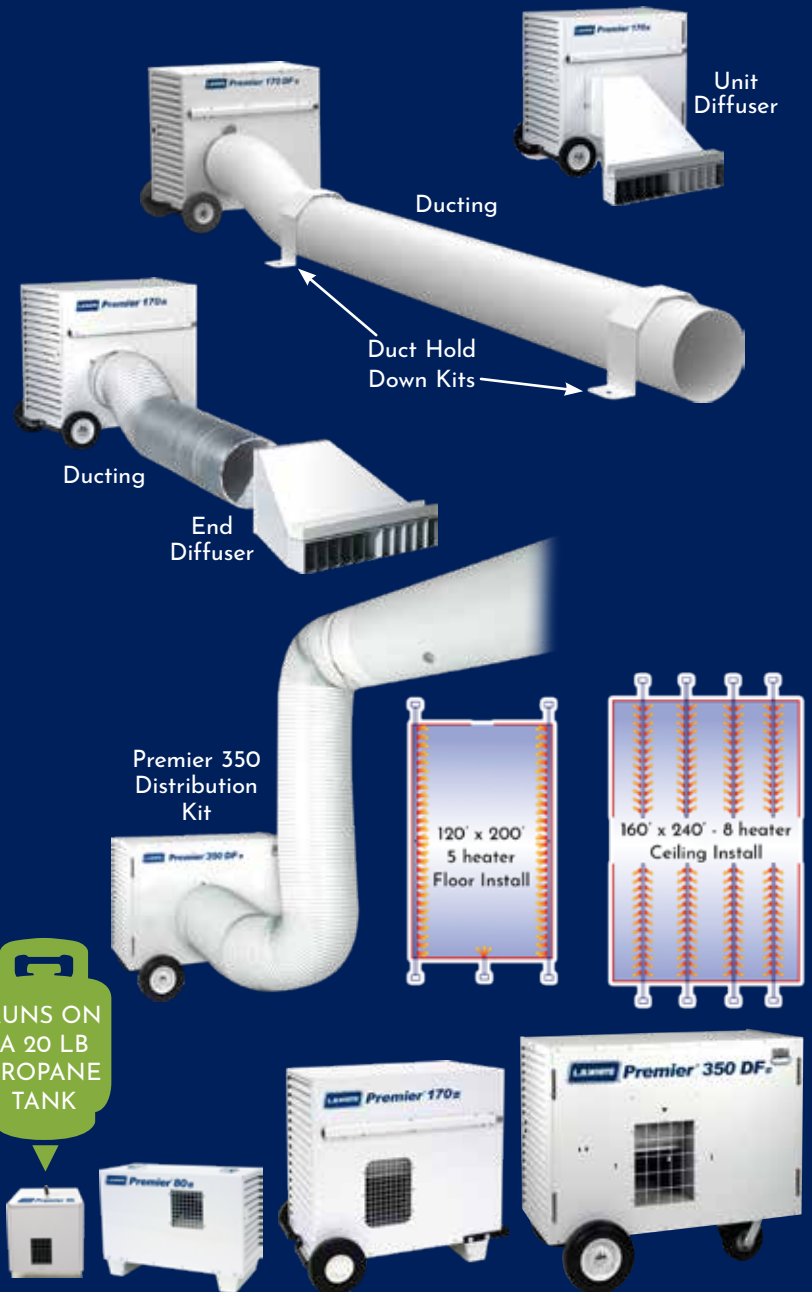
Ducting and unit diffusers connect magnetically for an easy, clean connection*. No pins or screws.



One Person Portable

From handles to wheel features, every Premier model is carefully designed to move about the event site or to the next rental location with ease.

*Magnetic duct adapters and unit diffusers compatible with all model designs. Premier 80 2.0 compatible with 2.0 unit diffuser only.



RUNS ON
A 20 LB
PROPANE
TANK

PREMIER®	40	80 _{2.0}	170 _{2.0}	350 DF _{2.0}
BTU/HR Rating	40,000	80,000	170,000	350,000
Certified for use in U.S. & CAN	Yes	Yes	Yes	Yes
Running Decibels	62	70	70	72
Fuel Type	LP Gas	LP Gas or Dual Fuel (LP-NG)	LP Gas or Dual Fuel (LP-NG)	Dual Fuel (LP-NG)
Minimum LP Gas Tank Size	20 lbs	2 x 40 lbs	100 lbs	500 gal
Power Requirements (Run Amps)	1	1.5	5	11
Size L x W x H (in)	24.8 x 14.5 x 16.2	28 x 13.5 x 22.75	32.3 x 24.3 x 32	48.3 x 28 x 41
Standard Accessories (Ship with Unit)	Hose Regulator Thermostat	Hose Regulator Thermostat	Hose Regulator Thermostat	Hose Regulator Thermostat
Optional Accessories for Air Distribution (Order Separately)	8" Unit Diffuser 8" x 12' Duct Kit 8" Duct Hold Down Kit 8" End Diffuser	12" Unit Diffuser 12" x 12' Duct Kit 12" Duct Hold Down Kit 12" End Diffuser	18" x 12' Duct Kit 18" End Diffuser	

Foreman® Heaters



Indirect-fired heat technology is a solution when heated air that has not come in contact with the process of combustion is preferred or required, like:

- Tightly sealed temporary spaces like three season porches
- Clear span style structures that may not provide adequate exchange air
- Medical and specialty applications with strict air quality standards

Quiet Operation

Foreman® heaters operate at a noise level of less than 70 Db, which is no louder than average noise in an office, so go virtually unnoticed by guests.

Clean Look

A proprietary Tri-shield™ coated white case makes Foreman® heaters rust resistant, easy to clean, and a color that blends in with many tent structures.

Versatile Set-Up

- Rated for indoor and outdoor use
- Duct and diffusing options allow heated air to be distributed inside the tent with Foreman® setup outside
- Diesel operated models offer onboard fuel convenience that provide 7 to 19 hours of continuous runtime



Thermostatic Control Convenience

Every Foreman® heater can operate with a thermostat that allows the environmental temperature to be selected and maintained automatically when in operation. Use with an extension cord of your choice to setup and use remotely as well.



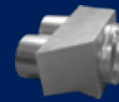
One Person Portable

From handles and wheels to lifting bails, every Foreman® model is equipped with features that make it easy to move about the event site or to the next rental location.



Efficient Storage

Designed so you have options to store during the off-season in a way that uses your space optimally.



This adapter directs the (2) 12" diameter outlets on Foreman 500 and 750s down to a single 16" diameter outlet



FOREMAN®	230	500	750
BTU/HR Rating	230,000	500,000	750,000
Certified for use in U.S. & CAN	Yes	Yes	Yes
Model Options:			
Dual Fuel (LP Gas/NG)	Yes	Yes	Yes
Minimum LP Gas Tank Size (gal)	100	500	500
Diesel	Yes	Yes	Yes
Max Run Time Per Diesel Tank (hrs)	24	17	11
Power Requirements (volts/hz/phase)	120/60/1	120/60/1	240/60/1
Size L x W x H (in)	60 x 26.5 x 43	94 x 32 x 53	94 x 32 x 53
Required Accessories (Order Separately)	Vent Stack Rain Cap Regulator Hose	Vent Stack Rain Cap Regulator Hose	Vent Stack Rain Cap Regulator Hose
Optional Accessories (Order Separately)	Thermostat	Thermostat Stacking Kit	Thermostat Stacking Kit
Air Distribution Accessories (Order Separately)	12" x 12' Duct Kit + 12" End Diffuser	(2) 12" x 12' Duct Kit + 12" End Diffusers OR Duct Adapter + 16" Duct Kit	(2) 12" x 12' Duct Kit + 12" End Diffusers OR Duct Adapter + 16" Duct Kit

Volt™ Heaters

*Product not available in Canada.



The electric spot heater

Volt™ electric heaters feature a user-friendly design and are capable of quick, high temperature rises.

They ideal for any areas that need added heat.

Ventilation and air circulation are not needed while operating this heater.

Safe & Reliable

- Quiet, combustion-free operation
- No fuel spills or odors
- Overheat protection at 104° F
- UL approved

Rental Tough

- Industrial-grade fan
- Stainless jacketed heating coils
- Powder coated steel housing
- High-quality sealed motor



Integrated Thermostat

Integrated ambient thermostat can be adjusted from 32°F - 100°F with the turn of a dial.



Green Energy

There is no fuel to burn, so this heater is better for the environment!



No Fuel Needed

Perfect for applications where no LP or NG fuel is available.



Cool-Touch Exterior

The heater is cool enough to safely touch while in operation.

*Only unit that can be used with a standard wall outlet.



Volt™	1.5	3	6	9	18-1	18-3	40	60
Wattage	1,500	3,000	6,000	9,000	19,000 (Full) 13,000 (Partial)	19,000 (Full) 13,000 (Partial)	40,000 (High) 32,000 (Medium) 16,000 (Low)	60,000 (High) 48,000 (Medium) 24,000 (Low)
BTU/H rating	5,100	10,200	20,500	30,700	65,000 (Full) 45,000 (Partial)	65,000 (Full) 45,000 (Partial)	136,500 (high) 102,400 (medium) 51,200 (low)	205,000 (high) 164,000 (Medium) 82,000 (low)
Connection Type	120 V* Grounded Outlet	Grounded Outlet or Generator	Grounded Outlet or Generator	Grounded Outlet or Generator	Hardwired	Hardwired	Hardwired	Hardwired
Electric supply (volts/hz/phase)	120/60/1	240/60/1	240/60/1	240/60/1	240/60/1	240/60/3	240/60/3	480/60/3
Amps (starting/continuous operation)	12.5	12.5	25	37.5	81 (full) 54 (Partial)	47 (full) 31 (Partial)	50 (High) 40 (Medium) 20 (Low)	75 (High) 60 (Medium) 30 (Low)
Power cord	10ft, 12AWG	10ft, 16AWG	10ft, 8AWG	10ft, 8AWG	Not included	Not included	Not included	Not included
UL approved	S	S	S	S	S	S	S	-

Quick Accessory Reference

Part #	Item Description	Premier				Foreman	
		40	80 _{2.0}	170 _{2.0}	350 _{2.0}	230	500/750
132544	Distribution Duct Kit, White, 8" dia. x 12'L	•					
26347	Distribution Duct Kit, White, 12" dia. x 12'L		•	•		•	•
22835	Distribution Duct Kit, Gray, 18" dia. x 12'L				•		
130-23053	Perforated Air Duct, White, 18" dia. x 100'L				•		
132540	Unit Diffuser for Premier 40	•					
132902	Unit Diffuser for Premier 80 _{2.0} *		•				
26351	Unit Diffuser for Premier 170			•			
132541	End Diffuser (fits on end of 8" dia. ducting)	•					
26350	End Diffuser (fits on end of 12" dia. ducting)		•	•		•	•
23189	End Diffuser (fits on end of 18" dia. ducting)				•		
30125	Thermostat w/ female plug and 25 ft cord	•	•	•	•	•	•
133323	Duct Hold Down Kit (fits 8" dia. ducting)	•					
133324	Duct Hold Down Kit (fits 12" dia. ducting)		•	•		•	•
132976	Thermostat w/ female plug and 4 ft cord	•	•	•	•		
30161	Exhaust Pipe, 6" dia.					•	•
30161A	Exhaust Pipe, 8" dia., Foreman 750 Oil Only						•
30162	Rain Cap, 6" dia					•	•
30162A	Rain Cap, 8" dia, Foreman 750 Oil Only						•
25141	Regulator, Foreman DF Only**					•	•
25965	Hose, 3/4" x 15 ft.					•	•
30902	Adapter Kit 16" dia. (fits two 12" dia. ducting)						•
30903	Stacking Kit						•

* Use 26349 for older Premier 80 models

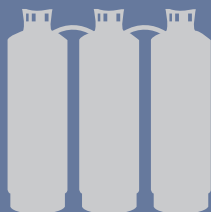
**When running on NG requires 1" hose diameter and inlet pressure of at least 10 P.S.I.
When inlet pressure is 2 to 10 P.S.I. use regulator, 132136.

BTU/Hour (Reference Chart)

Cubic Feet	Rise in Temperature				
	10°F / 6°C	20°F / 11°C	30°F / 17°C	40°F / 22°C	50°F / 28°C
4,000	5,320	10,640	15,960	21,280	26,600
8,000	10,640	21,280	31,920	42,560	53,200
12,000	15,960	31,920	47,880	63,840	79,800
16,000	21,280	42,560	63,840	85,120	106,400
20,000	26,600	53,200	79,800	106,400	133,000
24,000	31,920	63,840	95,760	127,680	159,600
28,000	37,240	74,480	111,720	148,960	186,200
32,000	42,560	85,120	127,680	170,240	212,800
36,000	47,880	95,760	143,640	191,520	239,400
40,000	53,200	106,400	159,600	212,800	266,000
44,000	58,520	117,040	175,560	234,080	292,600
48,000	63,840	127,680	191,520	255,360	319,200
52,000	69,160	138,320	207,480	276,640	345,800
56,000	74,480	148,960	223,440	297,920	372,400
60,000	79,800	159,600	239,400	319,200	399,000
64,000	85,120	170,240	255,360	340,480	425,600
68,000	90,440	180,880	271,320	361,760	452,200
72,000	95,760	191,520	287,280	383,040	478,800
76,000	101,080	202,160	303,240	404,320	505,400

See instructions on page 3.

What Size Gas Supply is Needed for My Heater?



Heaters up to 250,000 BTU/hr:

Average Temp (°F)	50°	40°	30°	20°	10°	-10°
Number of 100 LB. Gas Cylinders	2	2	3	3	3	3

Cylinders must be manifolded together or allow simultaneous vapor withdrawal from all cylinders.



Heaters greater than 250,000 BTU/hr:

500 gallon tank - 1 heater per tank

1000 gallon tank - 2 heaters per tank

(100LB. of propane = 23.6 gal [100/4.24])

Based in Onalaska, WI, L.B. White Company is America's leading designer, manufacturer and marketer of propane, natural gas and kerosene heaters for construction, agricultural, tent and greenhouse environments.

Founded in 1952, L.B. White offers over 70 years of leadership in heating design and manufacturing expertise.

Through the course of the company's history, L.B. White has established a significant leadership position in markets around the world by delivering innovative products and quality service that meet the evolving needs of customers.



Customer Service:

Phone: 608-779-6100

Email: customerservice@lbwhite.com



Technical Support:

Phone: 608-779-6101

Email: techsupport@lbwhite.com

To find the closest service center to you, visit www.lbwhite.com/ServiceCenter



Online Resources:

For frequently asked questions, service guides, troubleshooting and maintenance videos, visit www.lbwhite.com.

411 Mason Street • Onalaska, Wisconsin 54650

(800) 345-7200 - (608) 783-6115 fax

www.lbwhite.com



www.facebook.com/LBWhiteCompany