

INSTALLATION INSTRUCTIONS



Foreman 230 DF Gas Valve Cover

View these instructions online at www.lbwhite.com

Kit Contents:

DESCRIPTION	QTY.
Instructions	1
Sheet Metal Gas Valve Cover	1

Tools required:

5/32 Allen Wrench
Ratchet
1/2 in. Socket
1/2 in. Wrench

Requirements:

You must be able to read and understand these instructions before beginning the installation.

Discussion:

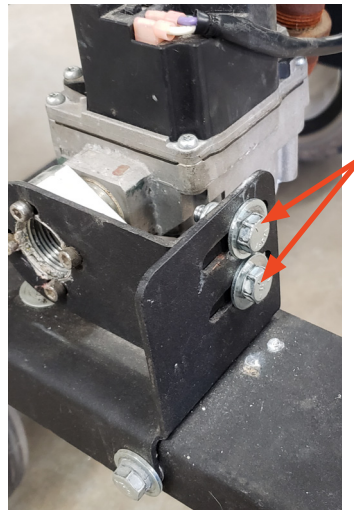
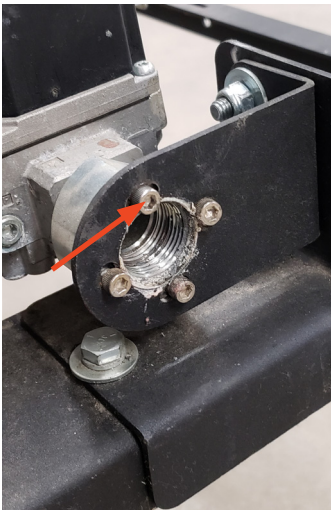
For outdoor use, a sheet metal cover will be require to protect the gas valve from dust, dirt, snow, ice, frost, and other foreign materials.

General Instructions:

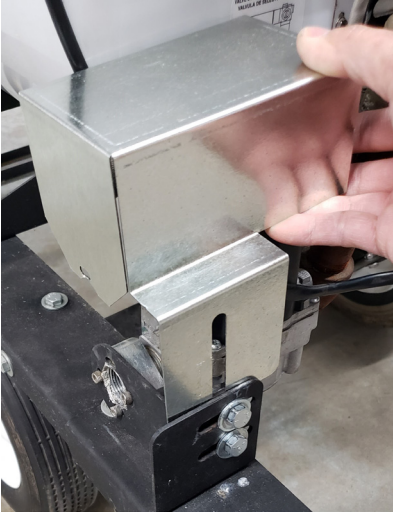
Disconnect the heater's electrical supply.

Installation Instructions:

1. Remove the top Allen head screw and loosen the two bolts from the gas valve bracket. Use the 1/2 closed wrench to hold the nut behind the bracket.



2. Position the sheet metal cover over the gas valve and slide it between the gas valve brackets.



3. Align the cover screw slot and securely tighten the cover with the previous removed Allen head screw.



4. Finish the installation by tightening the two bolts to fasten the cover to the gas valve bracket.



Service

Contact your local L.B. White dealer for replacement parts and service. You may also call the L.B. White Company, LLC at 1-800-345-7200, for assistance, or email us at customerservice@lbwhite.com.

Be sure that you have your heater model number and configuration number when calling.



**WORLD PROVIDER - INNOVATIVE
HEATING SOLUTIONS**

411 Mason Street, Onalaska, WI 54650

800-345-7200 • 608-783-5691

608-783-6115 (fax)

www.lbwhite.com

