

INSTALLATION INSTRUCTIONS



Commander Series Link Kit 500-133950

View these instructions online at www.lbwhite.com

Kit Contents:

DESCRIPTION	QTY.
Installation Instructions	1
Trackunit Module with mount bracket	1
Screw, #8-3/8 in. Sheet Metal	2

Tools required:

1/4 in. socket or Nut Driver
1/4 in. Drive Ratchet
1/4 in. Extension

Qualifications for installation of the kit:

- You must be able to read and understand these instructions before beginning the installation.
- You must be properly trained and have sufficient experience in servicing forced air heaters and capable of testing the heater for proper operation.

General information:

- The following instructions provide information on the installation of the LINK module to the Commander model.
- The module must not enter areas where it is prohibited to operate wireless phones or when doing so may cause interference or danger.
- The module cannot be turned off after installation as the device periodically turns on the transmitter to perform tracking reporting.

Safety Instructions:

- Close all gas valves to the heater.
- Allow the heater to cool down or in cold condition before beginning installation.
- Disconnect the heater from its electrical supply.
- Ensure all screws are securely tightened.



SCAN THIS

with your smartphone or
visit <http://goo.gl/5j21G>
to view maintenance
videos for L.B. White heaters.*

** Requires an app like QR Droid
for Android or for iPhone*

Initial Preparation:

1. Unlatch and open the control cabinet lid.
2. Remove the module mounting plate off the Trackunit module.

Installation:

1. Identify the mounting screw holes located on the base of the control cabinet near the regulator. If present, remove the screws and secure the mounting plate to the base. Refer to Fig. 1 and Fig. 2 for visual guidance.

FIG. 1

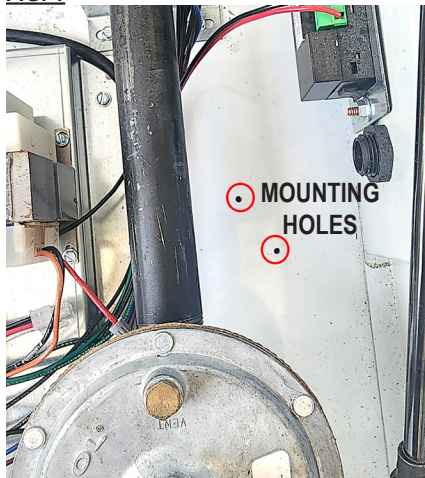
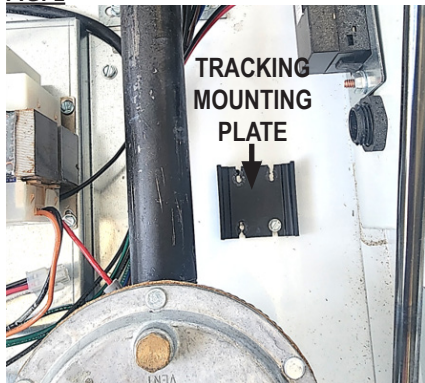


FIG. 2



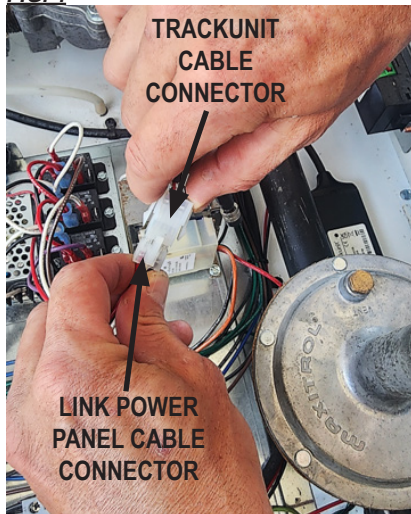
2. Attach the Trackunit module to the mounting plate by snapping it in place. Ensure that the cable is positioned on top and the label is facing upwards, as illustrated in Fig. 3.

FIG. 3



3. Route the Trackunit power cable underneath the gas train piping.
4. Connect the Trackunit power cable connector to the LINK power panel connector. Please note that the other cable of the Trackunit does not require connection to anything. Refer to Fig. 4 for visual guidance.

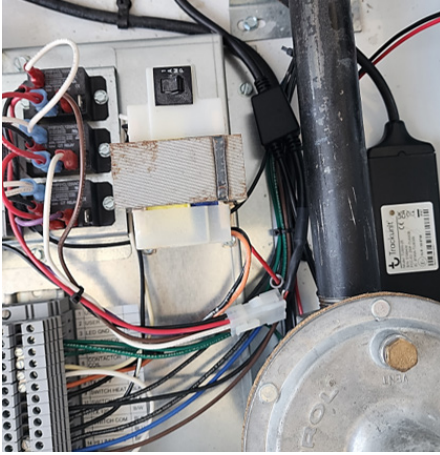
FIG. 4



Completion:

- Ensure that the connected wire harness is safely positioned on top of other wires and kept away from any sharp edges. As shown in Fig. 5 below.

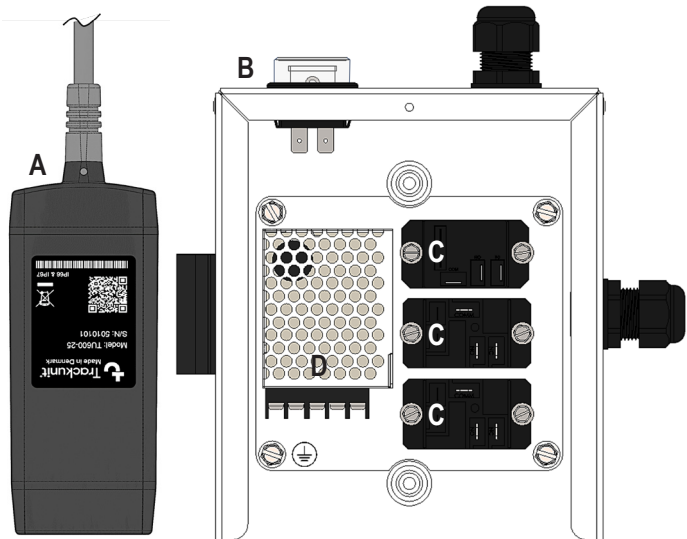
FIG. 5



Module Specification:

Standby time on the backup-battery	2-4 days
Charging time from an empty backup-battery	3 hrs. @ 77°F (25°C)
Expected lifetime of the backup-battery	3 yrs.
Environmental class	IP68

Replacement Parts:



ITEM NO.	DESCRIPTION	SERVICE NO.
A	Module	500-133950
B	FUSE, 32V, 2A, FAS	574278
C	RELAY, 120VAC COIL, SPDT, 40 AMP	574253
D	POWER SUPPLY, 120VAC/12VDC	574244

Service

Contact your local L.B. White dealer for replacement parts and service. You may also call the L.B. White Company, LLC at U.S. & Canada: 1-800-345-7200, Overseas: 001-608-783-5691 assistance, or email us at customerservice@lbwhite.com.

Be sure that you have your heater model number or serial number when calling.



WORLD PROVIDER - INNOVATIVE CLIMATE SOLUTIONS

411 Mason Street, Onalaska, WI 54650
800-345-7200 • 608-783-5691
608-783-6115 (fax)

www.lbwhite.com

150-133968 REV.B