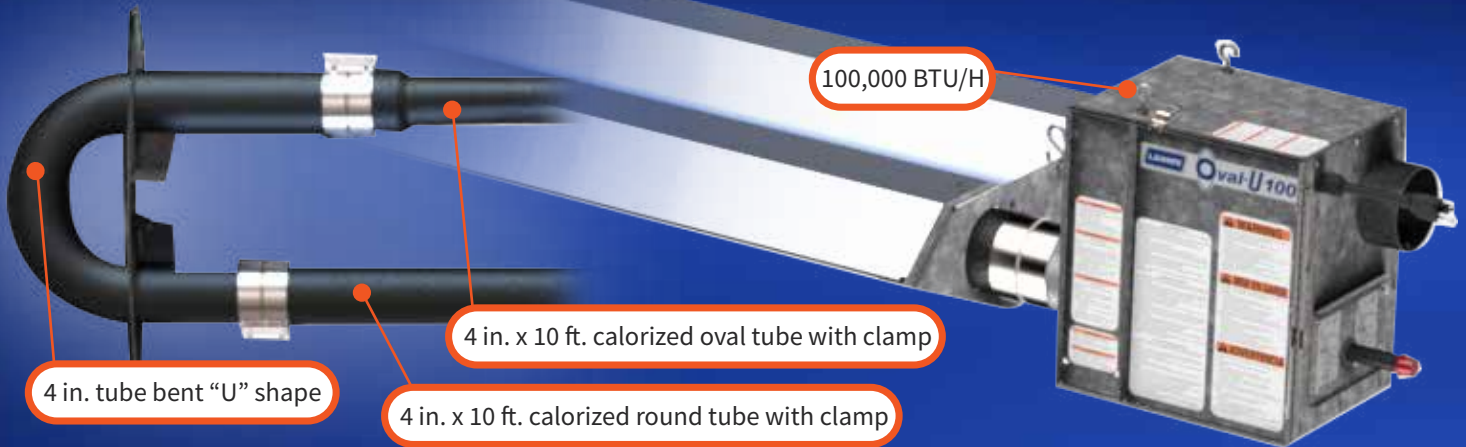


NEW! Oval-U 100

L.B.WHITE



Key features:

- Unique 4-inch round calorized tube transitioning to a 4-inch "U" bent tube, and lastly to a 4-inch oval calorized tube
- Widest and warmest heat pattern in the category
- Cool ceiling temperature
- Natural gas or liquid propane gas models
- Dependable spark ignition
- 100% test fired at our plant
- Can be installed in less than two minutes
- Easy maintenance

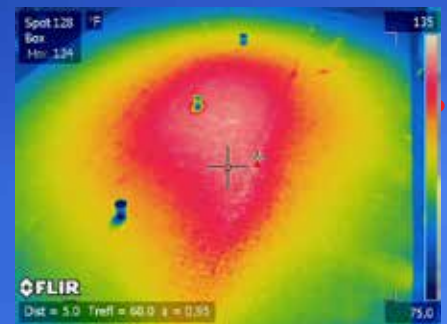
Easy Install: Out of the box and up.*



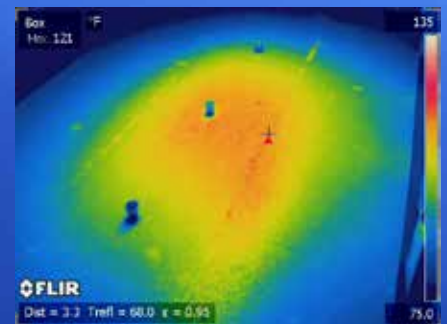
*Minor adjustments may be needed.

Heater length: 12.5 ft, Heater weight: 132 lbs

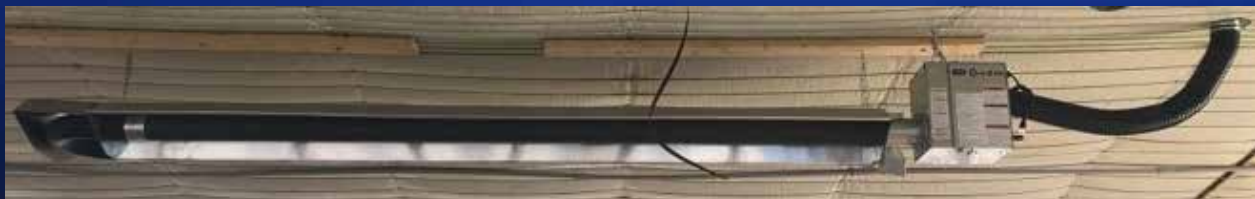
Wider Heat Coverage, Farther Heat Throw



Oval-U 100s have a wider heat pattern.



Competitive Unit



Oval-U hanging in a poultry house.

411 Mason Street, Onalaska, WI 54650
800 345 7200 (toll free) or 608 783 5691
608 783 6115 (fax)
info@lbwhite.com | www.lbwhite.com

NEW! PC-31

Portable Evaporative Cooler

Our new portable evaporative cooler is a compact, powerful, and economical option. Great for control rooms, offices, or any space that needs instant cooling.



INNOVATIVE

CLIMATE SOLUTIONS



REEVES SUPPLY

Galvanized Vents

Contact Reeves Supply for the most competitive rates on galvanized vents. Available in custom sizes for any job you may have.



Large P-Seal

The Reeves Large P-Profile seal is the answer to regain house tightness and improve energy efficiency in older poultry houses.



Size Comparison: Standard Door Seal & Large P-Profile Gasket

411 Mason Street, Onalaska, WI 54650
800 345 7200 (toll free) or 608 783 5691
608 783 6115 (fax)
info@lbwhite.com | www.lbwhite.com