



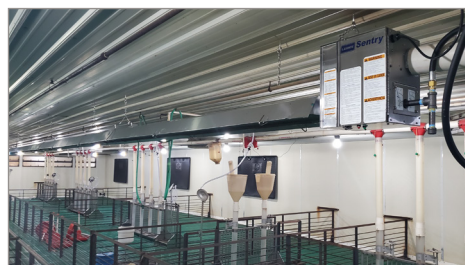
## Sentry® Radiant Tube Heater

HEAT  
WHERE  
YOU NEED  
IT!

The L.B. White Sentry® is the only radiant tube heater designed specifically for pig houses. With its advanced reflector and pressurized burner design, the Sentry® delivers maximum heat distribution, as well as even heat down the length of the tube. With interlocking tubes and self-leveling hangers included as part of a complete installation kit, the Sentry® is extremely easy to install and even easier to maintain. The Sentry's ability to use fresh air from an attic helps it run cleaner and require less maintenance.

L.B. White has perfected every aspect of our Sentry® radiant tube heater which is designed to withstand the harsh environments of swine facilities. This has led to our reputation for reliability, durability and serviceability in the field.

- ✓ Stainless steel burner box
- ✓ Choose from all aluminized or Stainless steel tubes
- ✓ Positionable shroud



## Volt® **NEW** Electric Heaters & Hanging Kits

NO GAS  
REQUIRED

Need convenient, clean heat? Volt® Electric Heaters are best for applications where heating is needed, as well as drying and ventilating. These portable forced air electric heaters feature a user-friendly electric design and are capable of quick, high temperature rises.

- Safe & Reliable
- Quiet, combustion-free operation
- No fuel spills or odors
- Overheat protection at 104° F
- UL approved

- ✓ User-friendly electric design
- ✓ For heating, drying and ventilating
- ✓ Capable of quick, high temp rises



Innovative Climate Solutions

411 Mason Street, Onalaska, WI 54650  
800 345 7200 (toll free) or 608 783 5691  
608 783 6115 (fax)  
info@lbwhite.com | www.lbwhite.com

Your L.B. White Dealer:

© 2024 L.B. White Company  
All rights reserved.  
All specifications are subject  
to change without notice.

**L.B.WHITE**

# SWINE HEATING SOLUTIONS

...setting the standard in swine heating.



## FORCED AIR RADIANT ELECTRIC

Products within brochure are subject to the following warning for CA residents:

**WARNING**

Cancer and reproductive harm. See  
[www.P65Warnings.ca.gov](http://www.P65Warnings.ca.gov).

800-345-7200 / 608-783-5691  
[www.lbwhite.com](http://www.lbwhite.com)





## SMART SENSE® Automatic Variable Rate

NEW  
TECH!  
SAVES  
MONEY!

Smart Sense® is a technologically-advanced swine facility heating solution. This **innovative heating technology** eliminates the inefficiency of standard on/off controls by managing the heat automatically through the house control. Smart Sense® operates at maximum efficiency to provide:

- ✓ Fuel-cost savings up to 35%
- ✓ Consistent room temperature
- ✓ Enhanced animal welfare
- ✓ Improved air quality

The Smart Sense® system generates only the amount of heat required to reach, maintain, and hold a desired temperature by modulating Btu output. This is achieved only through our patented technology engineered for Smart Sense® forced air heaters and radiant heat brooders.



Works with a wide range of house controls that offer a 0-10 volt signal.



## Unprecedented 3-Year Warranty

L.B. White is now offering a three year warranty on HSI and Spark Ignition Guardian® Forced Air Heaters placed in new swine houses. In order to take advantage of this great offer, please register your heater on our product registration page at <https://www.lbwhite.com/customer-care-center/registration-info>.



## GUARDIAN® 2.0 Forced Air Heaters

TRIED  
AND  
TESTED!

The L.B. White Guardian's time proven direct-fired design provides consistent, dependable heat for a range of swine production environments from gestation all the way through finishing.

CSA U.S. and Canada certified, Guardian heaters feature:

- ✓ 60,000 Btu/h to 325,000 Btu/h
- ✓ Spark, Hot Surface or Pilot Light Ignition
- ✓ Tri-Shield or galvanized case finish
- ✓ Highly efficient, direct-fired design
- ✓ Variable heat output
- ✓ Advanced Service Saver™ diagnostic feature
- ✓ Indoor and outdoor installation options



## CLASSIC™ Forced Air Heaters

SIMPLE  
TECH.

L.B. White Classic™ heaters are designed with easy installation, reliable performance and low maintenance in mind.

- ✓ Range of models from 60,000 Btu/h to 115,000 Btu/h
- ✓ Highly efficient, pilot light design
- ✓ Choice of propane or natural gas
- ✓ Exclusive Tri-Shield case protection
- ✓ Versatile indoor mount options

In addition, each L.B. White Classic™ comes equipped with eyebolts and chains for easy hanging. And all L.B. White Classic™ heaters are available in CSA U.S. and Canada certified models.

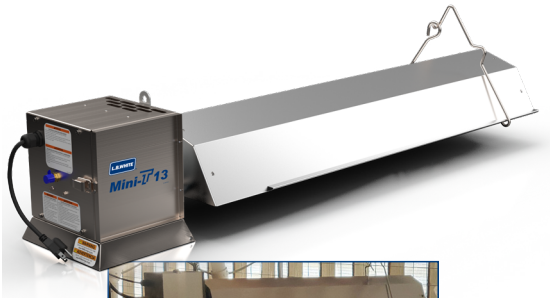


## Mini-T™ **NEW** Radiant Tube Heater

ENERGY  
EFFICIENT  
LOW  
LABOR

This swine heater is ultra low maintenance and easy to clean due to few parts. The Mini-T gives you better heat coverage than traditional brooders and uses less gas!

- ✓ 13,000 Btuh
- ✓ Up to 20% energy savings with lower gas usage
- ✓ Better heat coverage than traditional brooders
- ✓ Variable rate with zone panel
- ✓ Easy to clean (power washable)
- ✓ Can be hoisted and stored out of the way
- ✓ House control available



## I-SERIES Radiant Heaters

HEATS  
AREA  
QUICKLY

The I-Series unique design delivers more radiant energy to the ground than other heating solutions so you get a broader, more consistent heat pattern with less fuel. This means your pigs stay warm, so they eat more and grow faster. And you save money because you're providing better heating with less fuel.

- ✓ Better survival rates
- ✓ Better rates of gain
- ✓ Reduced piling
- ✓ Lower medical costs

