

# Oval 80™ Radiant Tube Heater Specifications

| Model Numbers                                    | Oval 80™          |
|--|-------------------|
| Maximum Input (Btu/h):<br>Single Stage           | 80,000            |
| Tube Length (ft.):                               | 20                |
| Minimum Installation Height (ft.):               | 6                 |
| Inlet Gas Supply Pressure:                       |                   |
| - Propane (in. w.c.)                             | 11-13.5           |
| - Natural Gas (in w.c.)                          | 7-13.5            |
| Fuel Consumption (max.):                         |                   |
| - Liquid Propane Gas (lbs./hr.)                  | 3.7               |
| - Natural Gas (cu. ft./hr.)                      | 80                |
| Ventilation (CFM):                               | 140               |
| Spark Ignition:                                  | Yes               |
| Temperature Controls Available:                  |                   |
| - Individual Thermostat Control                  | Yes               |
| - Wired to House Environmental Control           | Yes               |
| Electrical Requirements<br>(Volts / Hz / Phase): | 115 / 60 / 1      |
| Minimum Clearance to Combustibles (ft.):         |                   |
| - Top  | 1                 |
| - Side   | 6                 |
| - Below  | 6                 |
| Heater Case Dimensions (in.):                    |                   |
| - Height   | 9.5               |
| - Width  | 18                |
| - Length   | 30                |
| Net Weight (lbs.):                               | 81                |
| Shipping Weight (lbs.):                          | 350*              |
| Reflector Material:                              | Polished Aluminum |
| Tube Material:                                   |                   |
| - First 10 ft. section                           | Aluminum Steel    |
| - Balance  | Steel             |
| 3/8" x 6' Gas Hose:                              | S                 |
| Hanging Hardware:                                | S                 |
| Regulator:                                       | O                 |
| Piping Hardware, including gas shutoff:          | O                 |
| Air Inlet Kit                                    | O                 |

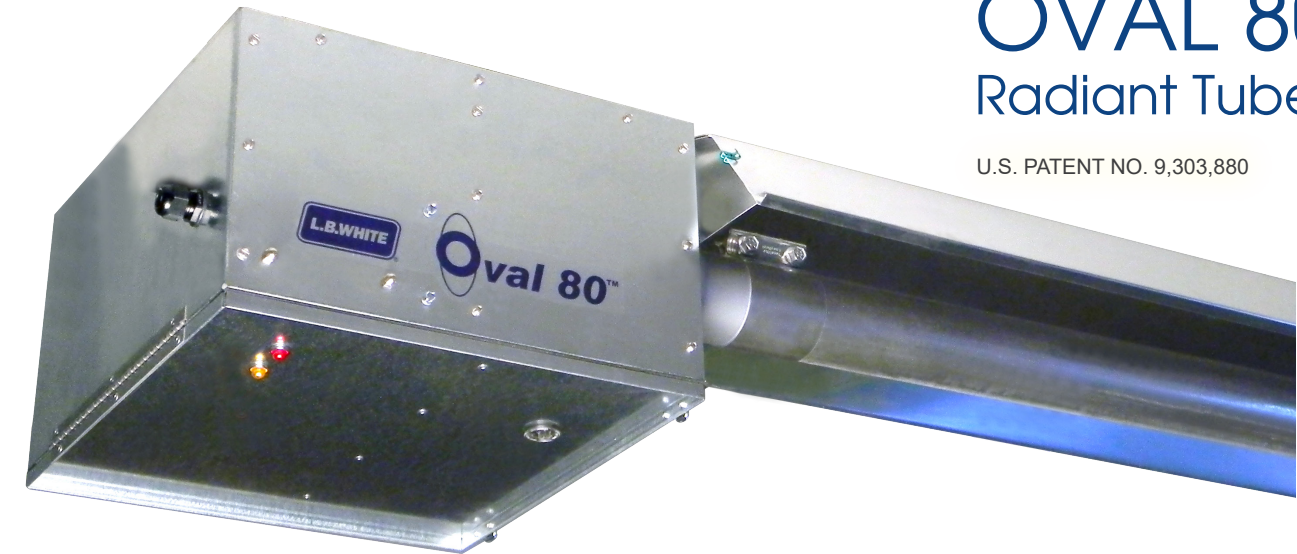
\*Shipped in sets of 4

S = Standard  
O = Optional



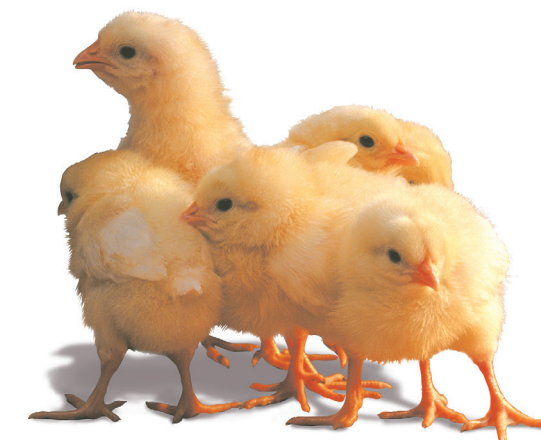
## OVAL 80™ Radiant Tube Heater

U.S. PATENT NO. 9,303,880



# DELIVERS MORE HEAT

where you need it, than any other tube heater



Innovative Heating Solutions

411 Mason Street, Onalaska, WI 54650  
800 345 7200 (toll free) or 608 783 5691  
608 783 6115 (fax)  
info@lbwhite.com | www.lbwhite.com

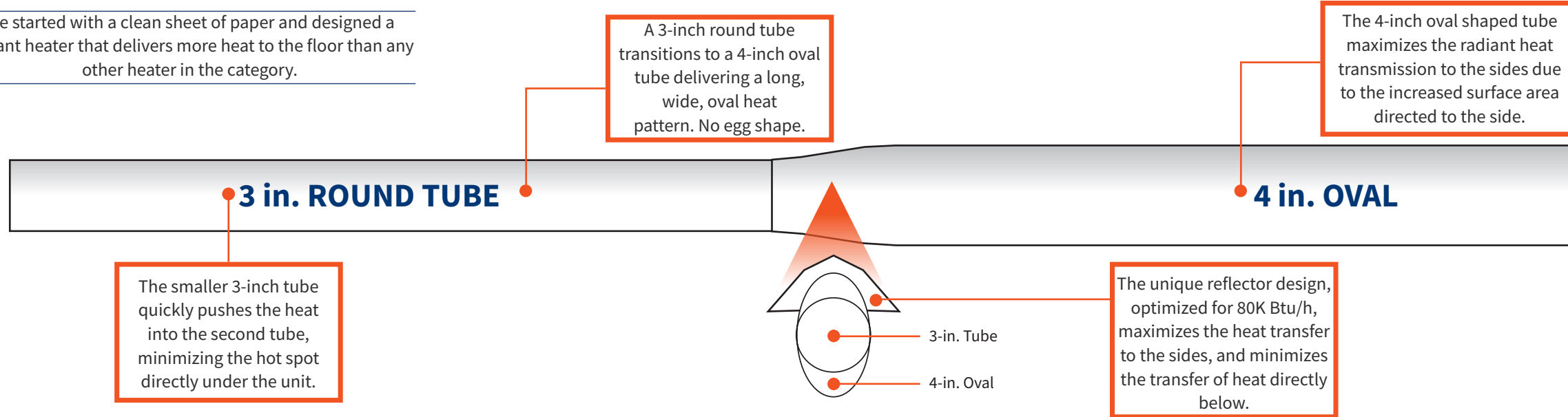
Your L.B. White Dealer:

**CA RESIDENTS:**  
**WARNING**  
Cancer and reproductive harm. See  
[www.P65Warnings.ca.gov](http://www.P65Warnings.ca.gov).

© 2018 L.B. White Company  
All rights reserved.  
All specifications are subject  
to change without notice.

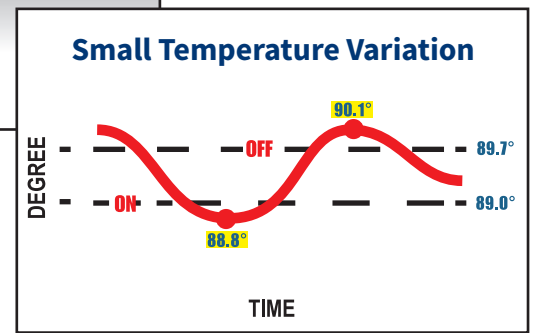
800-345-7200 / 608-783-5691  
[www.lbwhite.com](http://www.lbwhite.com)

We started with a clean sheet of paper and designed a radiant heater that delivers more heat to the floor than any other heater in the category.

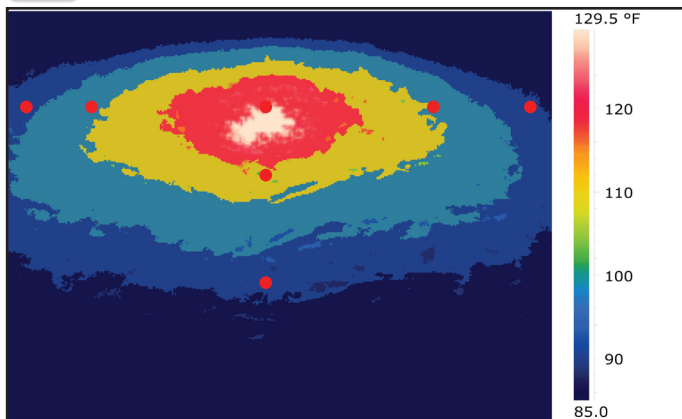


The Oval 80 radiant heater achieves a tight temperature range, varying less than 1.5°F between cycles.

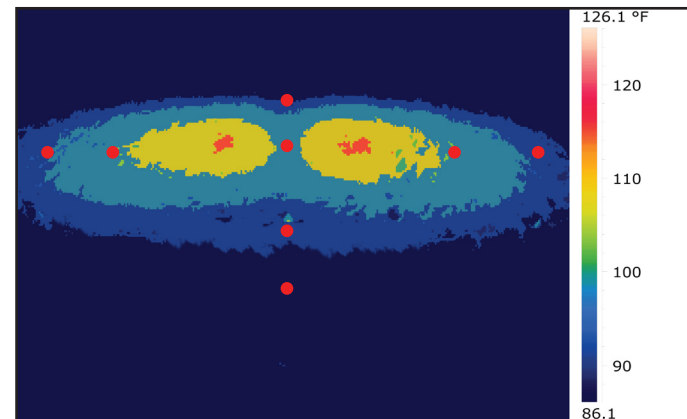
**Quicker pre-heat time SAVES FUEL!**



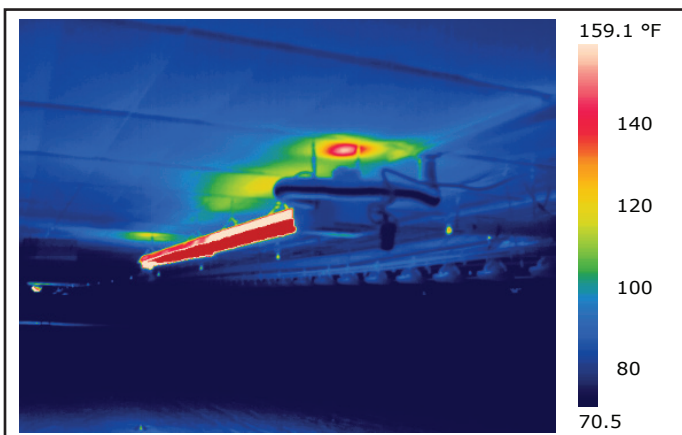
## More Heat to the Floor / Cooler Ceiling Temperature



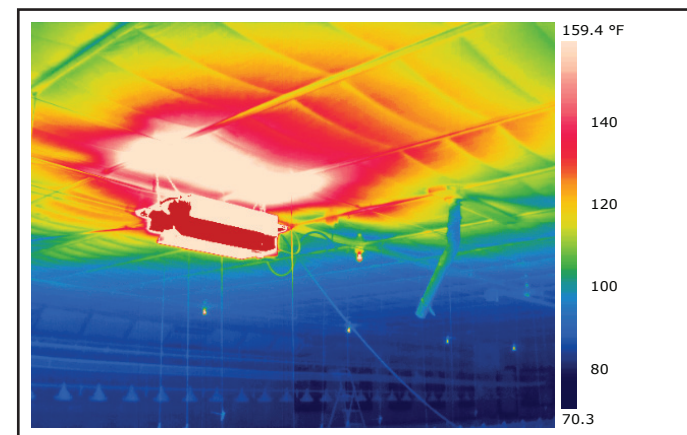
Oval 80 has longer, oval heat pattern.



Competitive Unit



Oval 80 ceiling temperature = 133°F, no need for insulation board above the heater.



Competitive Ceiling Temperature (Max.) = 190.6°F.

## Easy to Install and Maintain

Oval 80 radiant heaters are 100% test fired at the factory and come with all the components you need for easy installation. The Oval 80 uses fresh air for combustion, not dirty, caustic house air. Components stay clean and it's practically MAINTENANCE FREE!

- Utilizes fresh air
- Totally enclosed components
- Even burner performance regardless of fan or ventilation operation
- Components are accessible and easy to replace
- Diagnostic lights on bottom of unit are visible from entire house



## Application - Example Heater Placement

